

Manual for SMART-BUS IPHONE App PRO

Manual Version: 1.3

Updated Date: Aug 27, 2012

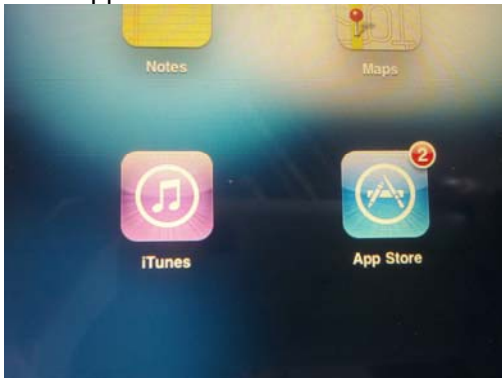
Copyright: SMART GROUP

SMART-BUS IPHONE App version required: **PRO V1.5.21** Aug 27, 2012 or above

S/N	TABLE OF CONTENT
1	Download & Install SMART-BUS IPHONE App from Apple Store
2	Install software “ SQLite Expert Personal ” on your computer
3	Getting the database file “Database.sqlite3”
4	Open File Database.sqlite3
5	Zone Settings
6	Systems in Zone
7	Lights in Zone
8	AC in Zone
9	Z-Audio Settings
10	Media in Zone
10.1	TV
10.2	Apple TV
10.3	DVD
10.4	Projector
10.5	SAT. /Cable
11	Shades in Zone
11.1	System settings if has shade in zone
11.2	Add shades to the Zone
11.3	Commands for the shade
12	Mood Recording in Zone
13	Macro buttons
20	Download database to IPHONE/IPAD from FTP Server

1. Download & Install SMART-BUS IPHONE App from Apple Store

SMART-BUS IPHONE App is available on Apple Store,
Click Apple Store Icon on IPAD/IPHONE,



Search the keyword "smart G4"



Click the button INSTALL above

2. Install software "SQLite Expert Personal" on your computer

If you don't have SQLite software, it is available on www.smarthomebus.com website, here is the link:

<http://smarthomebus.com/dealers/Softwares/SQLiteExpertPersSetup%20for%20windows.exe>

Download and install it on your computer

3. Getting the database file “Database.sqlite3”

if you are first time program the Smart-BUS IPHONE app or don't have the database for smart-bus IPHONE app, you can take the database from Smart-BUS IPHONE app, here are the steps:



Step 1: Install FTP software on your computer

The FTP software is available from the link below:

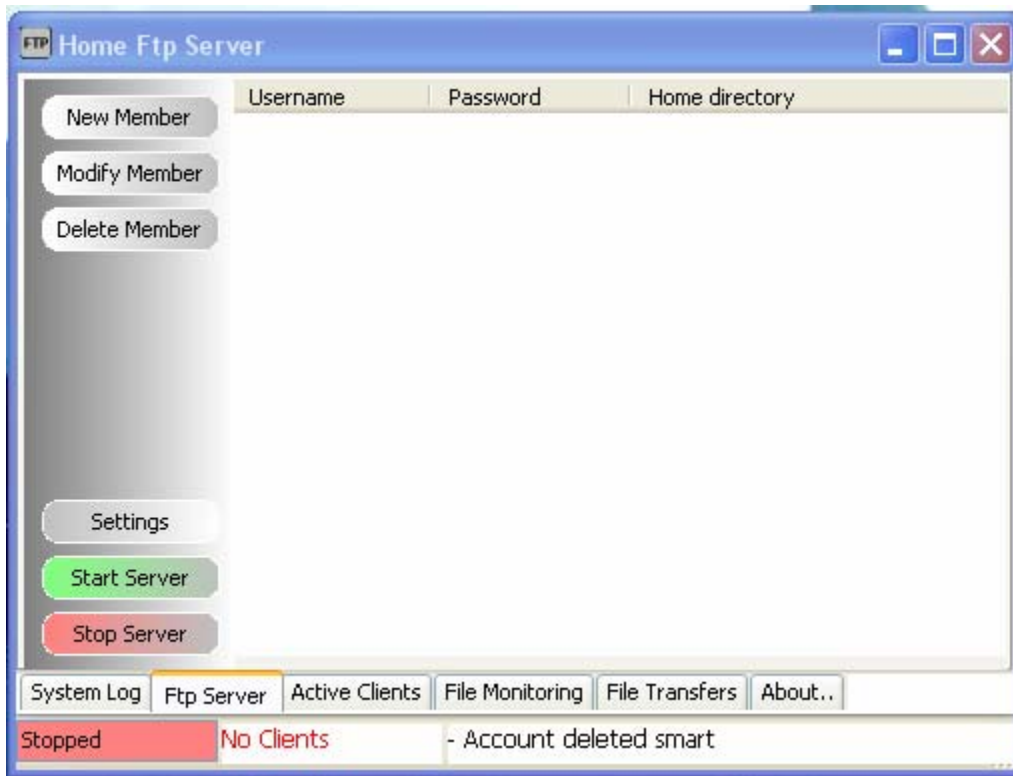
<http://smarthomebus.com/dealers/Softwares/HomeFtpServerInstall.exe>

After download just install it.

Step 2: Setup FTP Server

Run the FTP software on desktop





Click the button **New Member**

Ftp Client Editor

General Virtual Directories File Control

User name:

Password:

Home directory:

Download Speed: Bytes/s, 0 = No Limitation

Upload Speed: Bytes/s, 0 = No Limitation

Disk space: Bytes, 0 = Limited to disk size

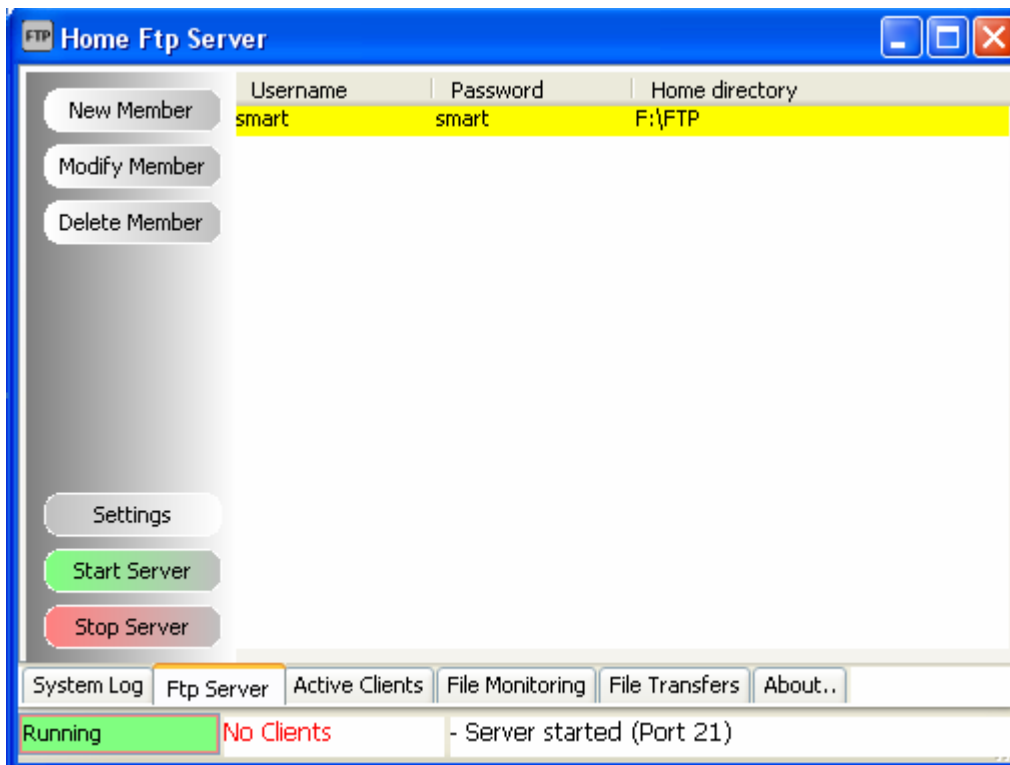
Home Directory:	Virtual Directories (if any defined):
<input checked="" type="checkbox"/> Allow download files	<input checked="" type="checkbox"/> Allow download files
<input checked="" type="checkbox"/> Allow upload files	<input type="checkbox"/> Allow upload files
<input checked="" type="checkbox"/> Allow renaming files (or directories)	<input type="checkbox"/> Allow renaming files (or directories)
<input checked="" type="checkbox"/> Allow deleting files	<input type="checkbox"/> Allow deleting files
<input checked="" type="checkbox"/> Allow change directory	<input checked="" type="checkbox"/> Allow change directory
<input checked="" type="checkbox"/> Allow creating directories	<input type="checkbox"/> Allow creating directories
<input checked="" type="checkbox"/> Allow deleting directories	<input type="checkbox"/> Allow deleting directories

Input the username: smart

Password: smart

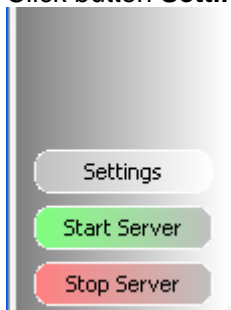
Choose Home directory,

Then click button **Apply**

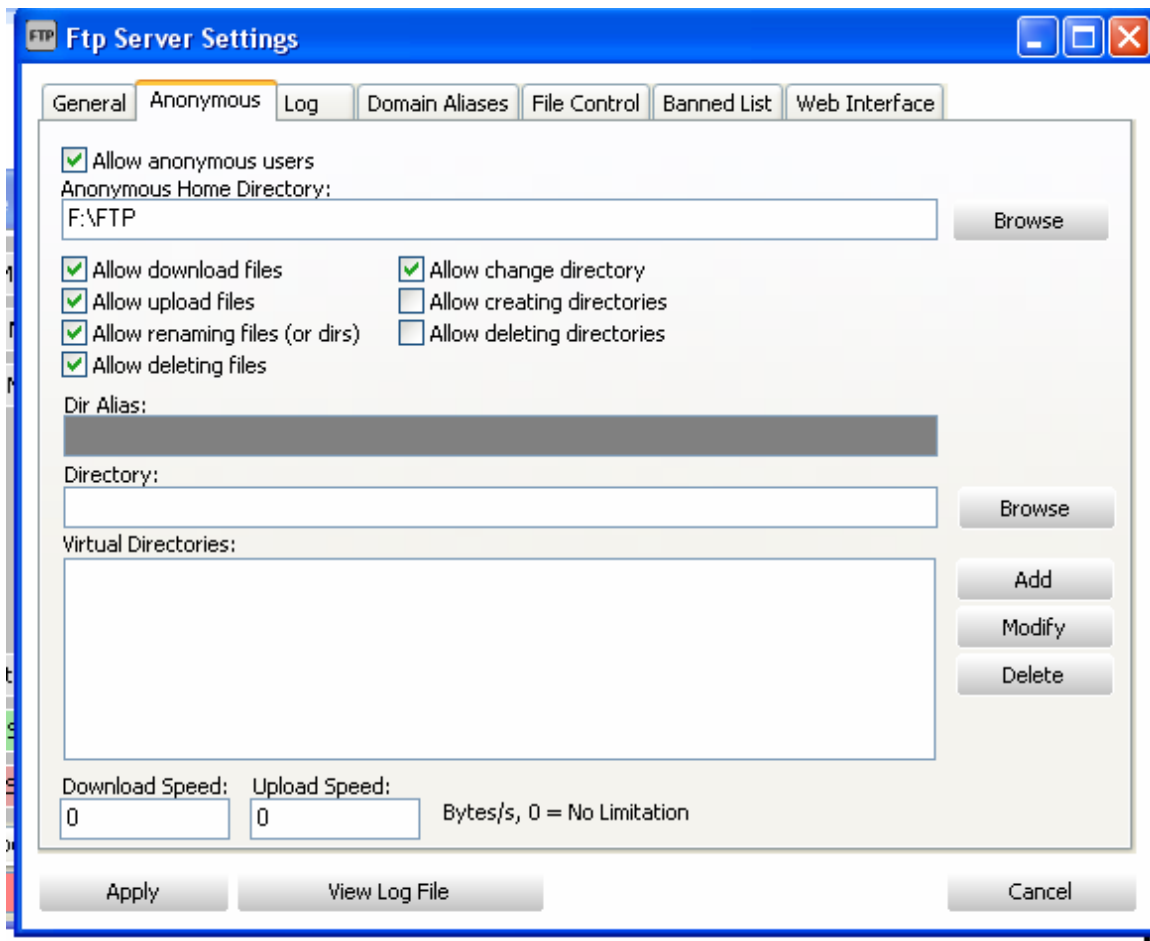


Click the button **Start Server**, if the server is started, the text **Running** is shown on the status bar.

Click button **Settings**



Select **Anonymous**



Select the directory of FTP,
check Allow download files
Check Allow deleting files and so on like above.

Step 3: Upload database to FTP Server

To go to settings page, click the G4 icon on top right corner on main page



Click the button **Database Upload & Download**

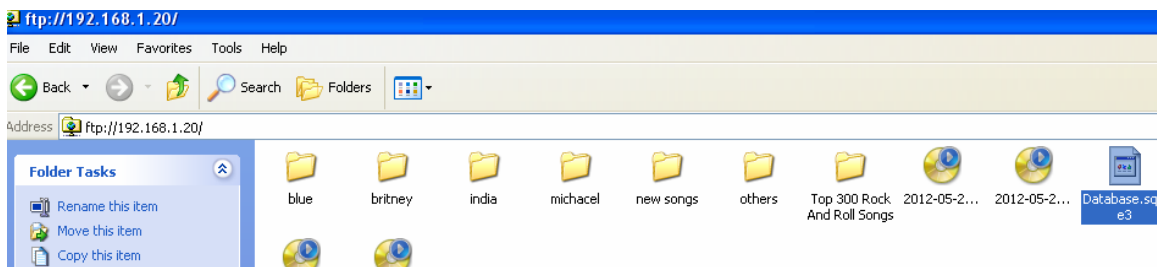


Input FTP Server Address and username and password like the below, then click button **Save**



Click button **Upload** above

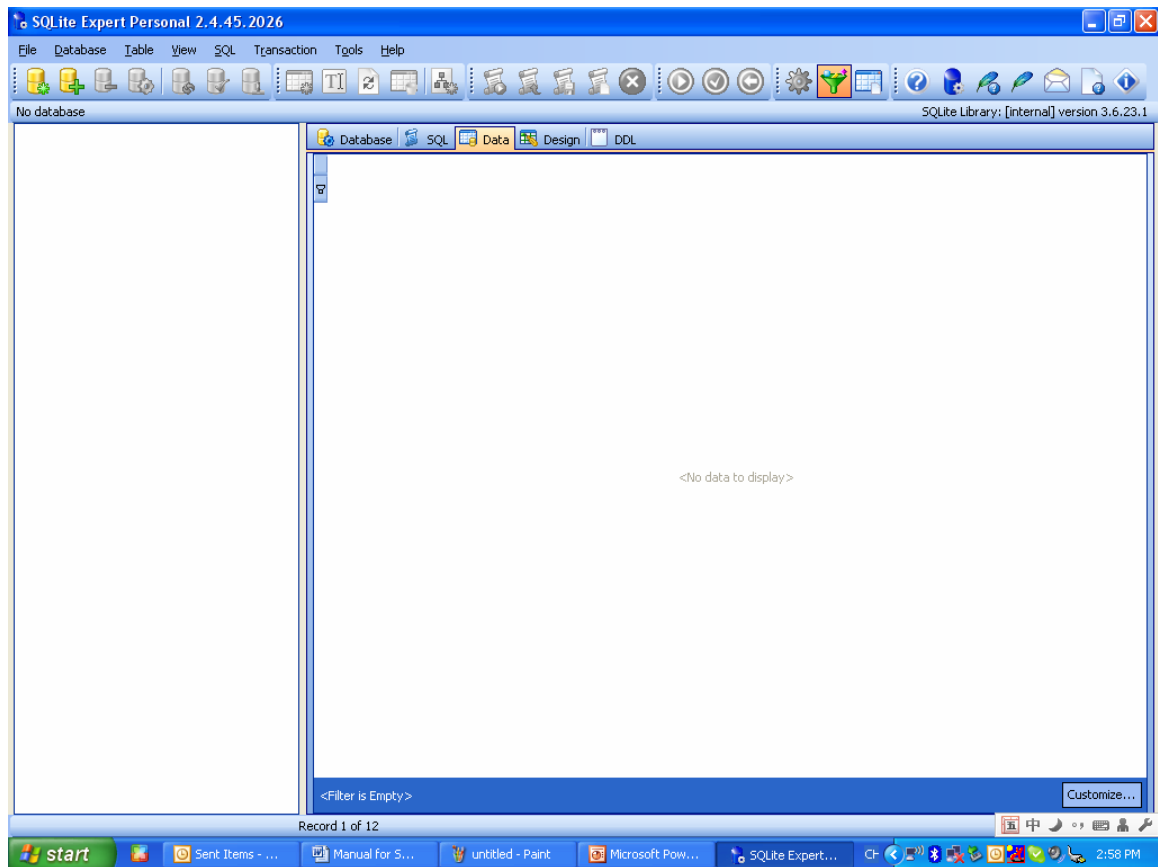
On FTP server, the file Database.sqlite3 is found when the uploading is done.



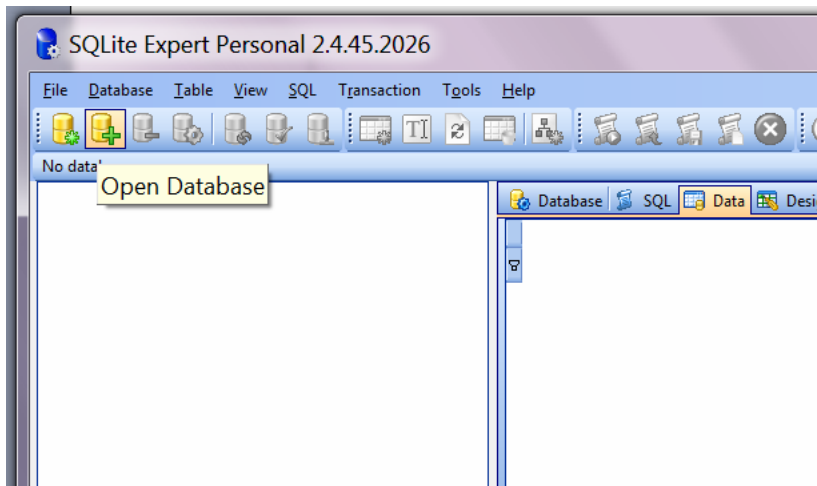
4. Open File Database.sqlite3

Before making any modification, Backup database is highly recommended

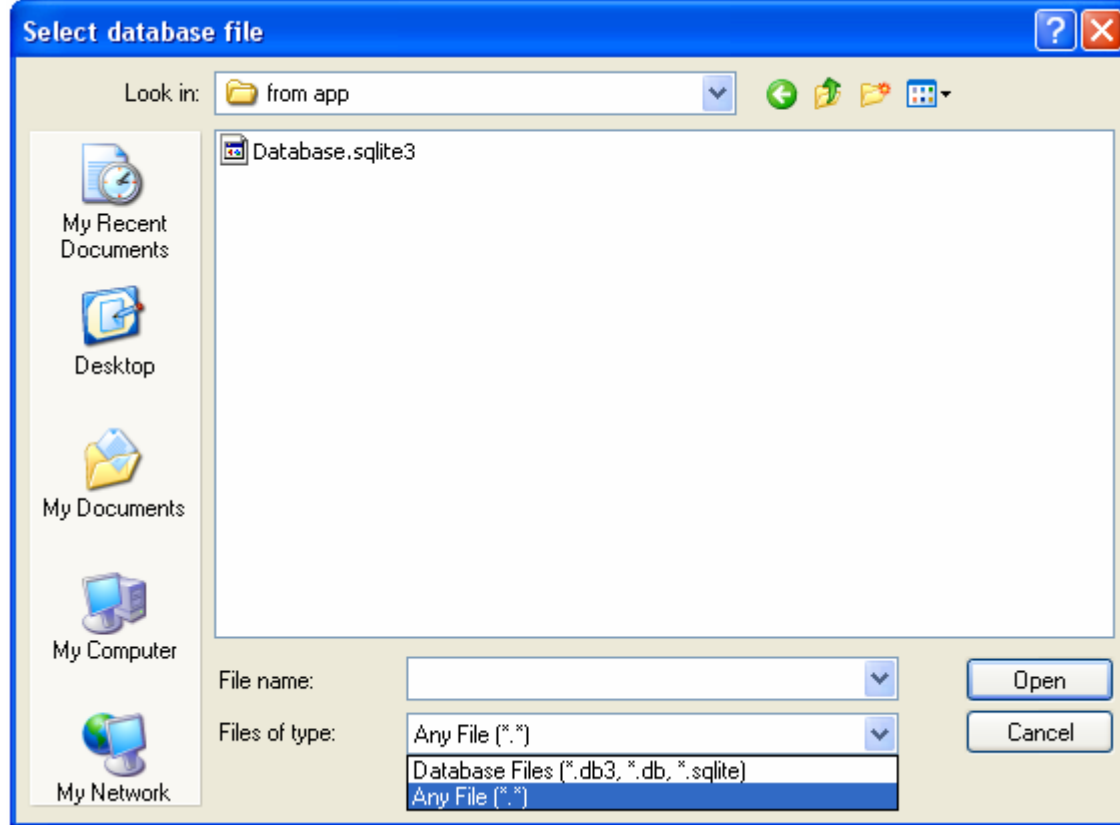
run SQLite software on your computer desktop



Click the button “Open Database” on the toolbar

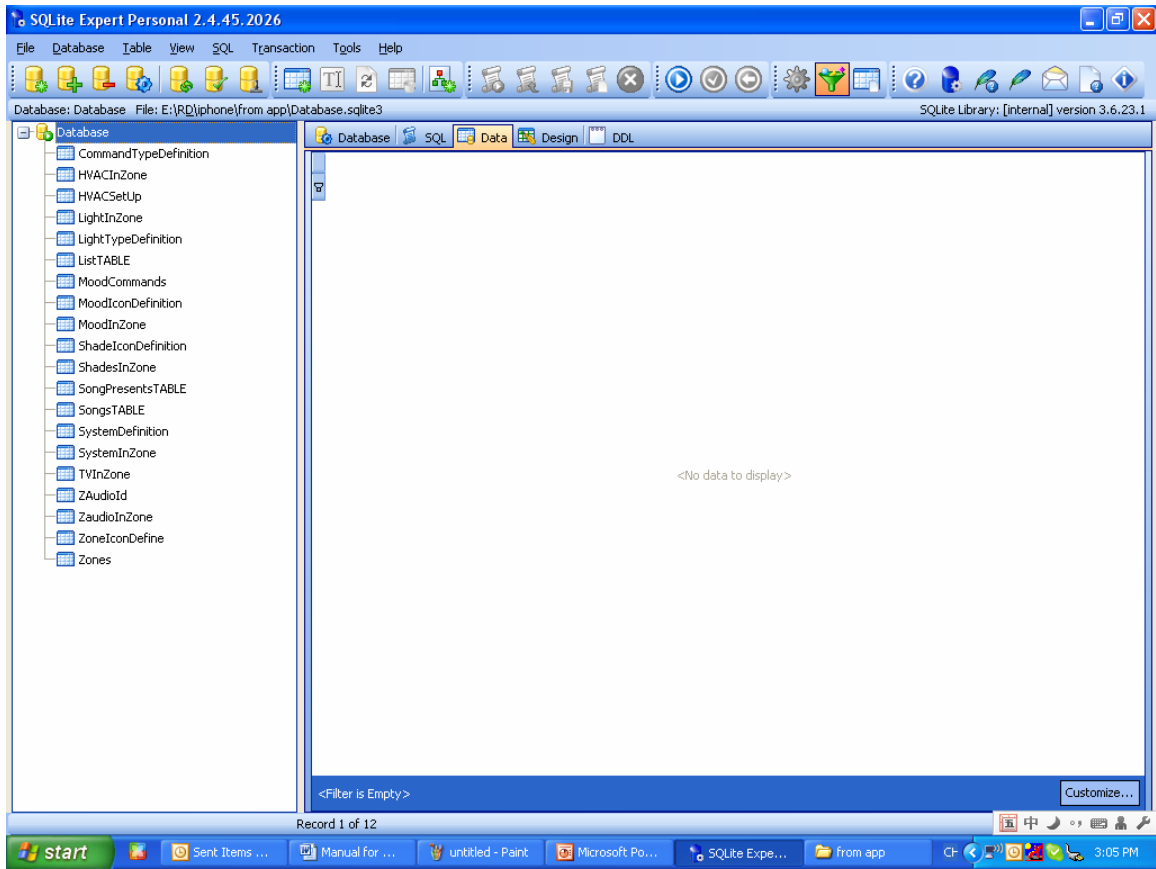


Select the **Files of Type** to be **Any File (*.*)**, then the database.sqlite3 is found



Open the file "Database.sqlite3"

All the tables of this database is shown below:



From now on, you can start to configure the SMART-BUS IPHONE App.

5. Zone Settings

Important Note:

When you are configuring the database, please do not change the structure of database.

For example:

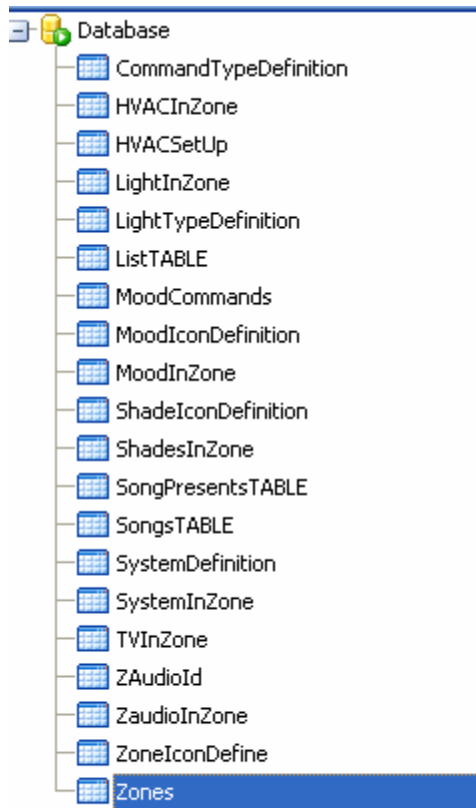
- Do not delete any table

- Do not change any table name

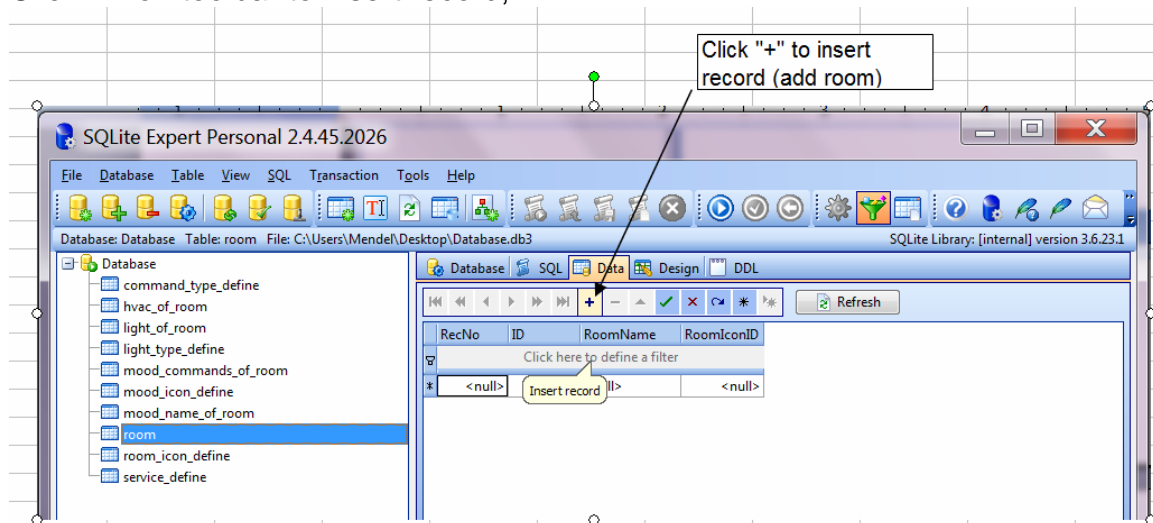
- Do not add/change/delete any fields of tables

- we just need to add/edit/delete data on the tables.**

Select the table "Zone"



Click “+” on toolbar to insert record,




Here the fields of table Zone:




Field Name	Remark	Value
ZoneID	This is the ID of Zone, every zone	It's number, Start from 1

	has unique ZoneID. 	
ZoneName	this is zone name, zone name can not be null, the max. Length of zone name is 15 letters. it will be shown on the zone list of main page	Letters
ZoneIconID	This is the ID of Zone Icon; each ID stands for one icon. please see the definition below	from 0 to 15
SequenceNo	This is the display order	Start from 1

The definition of Zone Icon

ZoneIconID	Icon name	Icons
1	Living room	
2	Bed room 1	
3	Meeting room	
4	Kitchen room	
5	Garden room	

6	Parking room	
7	GYM	
8	Master bed room	
9	Bedroom 2	
10	Dining room	
11	Toilet	
12	Study room	

13	Stair	
14	SMART G4 Demo kit	
15	Show room	
16	TEST	
17	formal	
18	entrance	

19	Living room 2	
20	Living room 3	
21	Living room 4	
22	Bedroom 2	
23	Bedroom 3	
24	Bedroom 4	

25	Bar 1	
26	Bar 2	
27	Bar 3	

Here are the examples:

Add Zone

ZoneID=10

ZoneName=Dining Room,

ZoneIconID=10 (check the definition “ZoneIconID” above)

SequenceNo=10

<div><div><div><div><div><div></div></div><div><div></div></div><div><div></div></div><div><div></div></div><div><div></div></div><div><div></div></div><div><div></div></div><div><div></div></div><div><div></div></div><div><div></div></div><div><div></div></div><div><div></div></div><div><div></div></div><div><div></div></div><div><div></div></div><div><div></div></div><div><div></div></div><div><div></div></div><div><div></div></div><div><div></div></div><div><div></div></div><div><div></div></div><div><div></div></div><div><div></div></div><div><div></div></div><div><div></div></div><div><div></div></div><div><div></div></div><div><div></div></div><div><div></div></div><div><div></div></div><div><div></div></div><div><div></div></div><div><div></div></div><div><div></div></div><div><div></div></div><div><div></div></div><div><div></div></div><div><div></div></div><div><div></div></div><div><div></div></div><div><div></div></div><div><div></div></div><div><div></div></div><div><div></div></div><div><div></div></div><div><div></div></div><div><div></div></div><div><div></div></div><div><div></div></div><div><div></div></div><div><div></div></div><div><div></div></div><div><div></div></div><div><div></div></div><div><div></div></div><div><div></div></div><div><div></div></div><div><div></div></div><div><div></div></div><div><div></div></div><div><div></div></div><div><div></div></div><div><div></div></div><div><div></div></div><div><div></div></div><div><div></div></div><div><div></div></div><div><div></div></div><div><div></div></div><div><div></div></div><div><div></div></div><div><div></div></div><div><div></div></div><div><div></div></div><div><div></div></div><div><div></div></div><div><div></div></div><div><div></div></div><div><div></div></div><div><div></div></div><div><div></div></div><div><div></div></div><div><div></div></div><div><div></div></div><div><div></div></div><div><div></div></div><div><div></div></div><div><div></div></div><div><div></div></div><div><div></div></div><div><div></div></div><div><div></div></div><div><div></div></div><div><div></div></div><div><div></div></div><div><div></div></div><div><div></div></div><div><div></div></div><div><div></div></div><div><div></div></div><div><div></div></div><div><div></div></div><div><div></div></div><div><div></div></div><div><div></div></div><div><div></div></div><div><div></div></div><div><div></div></div><div><div></div></div><div><div></div></div><div><div></div></div><div><div></div></div><div><div></div></div><div><div></div></div><div><div></div></div><div><div></div></div><div><div></div></div><div><div></div></div><div><div></div></div><div><div></div></div><div><div></div></div><div><div></div></div><div><div></div></div><div><div></div></div><div><div></div></div><div><div></div></div><div><div></div></div><div><div></div></div><div><div></div></div><div><div></div></div><div><div></div></div><div><div></div></div><div><div></div></div><div><div></div></div><div><div></div></div><div><div></div></div><div><div></div></div><div><div></div></div><div><div></div></div><div><div></div></div><div><div></div></div><div><div></div></div><div><div></div></div><div><div></div></div><div><div></div></div><div><div></div></div><div><div></div></div><div><div></div></div><div><div></div></div><div><div></div></div><div><div></div></div><div><div></div></div><div><div></div></div><div><div></div></div><div><div></div></div><div><div></div></div><div><div></div></div><div><div></div></div><div><div></div></div><div><div></div></div><div><div></div></div><div><div></div></div><div><div></div></div><div><div></div></div><div><div></div></div><div><div></div></div><div><div></div></div><div><div></div></div><div><div></div></div><div><div></div></div><div><div></div></div><div><div></div></div><div><div></div></div><div><div></div></div><div><div></div></div><div><div></div></div><div><div></div></div><div><div></div></div><div><div></div></div><div><div></div></div><div><div></div></div><div><div></div></div><div><div></div></div><div><div></div></div><div><div></div></div><div><div></div></div><div><div></div></div><div><div></div></div><div><div></div></div><div><div></div></div><div><div></div></div><div><div></div></div><div><div></div></div><div><div></div></div><div><div></div></div><div><div></div></div><div><div></div></div><div><div></div></div><div><div></div></div><div><div></div></div><div><div></div></div><div><div></div></div><div><div></div></div><div><div></div></div><div><div></div></div><div><div></div></div><div><div></div></div><div><div></div></div><div><div></div></div><div><div></div></div><div><div></div></div><div><div></div></div><div><div></div></div><div><div></div></div><div><div></div></div><div><div></div></div><div><div></div></div><div><div></div></div><div><div></div></div><div><div></div></div><div><div></div></div><div><div></div></div><div><div></div></div><div><div></div></div><div><div></div></div><div><div></div></div><div><div></div></div><div><div></div></div><div><div></div></div><div><div></div></div><div><div></div></div><div><div></div></div><div><div></div></div><div><div></div></div><div><div></div></div><div><div></div></div><div><div></div></div><div><div></div></div><div><div></div></div><div><div></div></div><div><div></div></div><div><div></div></div><div><div></div></div><div><div></div></div><div><div></div></div><div><div></div></div><div><div></div></div><div><div></div></div><div><div></div></div><div><div></div></div><div><div></div></div><div><div></div></div><div><div></div></div><div><div></div></div><div><div></div></div><div><div></div></div><div><div></div></div><div><div></div></div><div><div></div></div><div><div></div></div><div><div></div></div><div><div></div></div><div><div></div></div><div><div></div></div><div><div></div></div><div><div></div></div><div><div></div></div><div><div></div></div><div><div></div></div><div><div></div></div><div><div></div></div><div><div></div></div><div><div></div></div><div><div></div></div><div><div></div></div><div><div></div></div><div><div></div></div><div><div></div></div><div><div></div></div><div><div></div></div><div><div></div></div><div><div></div></div><div><div></div></div><div><div></div></div><div><div></div></div><div><div></div></div><div><div></div></div><div><div></div></div><div><div></div></div><div><div></div></div><div><div></div></div><div><div></div></div><div><div></div></div><div><div></div></div><div><div></div></div><div><div></div></div><div><div></div></div><div><div></div></div><div><div></div></div><div><div></div></div><div><div></div></div><div><div></div></div><div><div></div></div><div><div></div></div><div><div></div></div><div><div></div></div><div><div></div></div><div><div></div></div><div><div></div></div><div><div></div></div><div><div></div></div><div><div></div></div><div><div></div></div><div><div></div></div><div><div></div></div><div><div></div></div><div><div></div></div><div><div></div></div><div><div></div></div><div><div></div></div><div><div></div></div><div><div></div></div><div><div></div></div><div><div></div></div><div><div></div></div><div><div></div></div><div><div></div></div><div><div></div></div><div><div></div></div><div><div></div></div><div><div></div></div><div><div></div></div><div><div></div></div><div><div></div></div><div><div></div></div><div><div></div></div><div><div></div></div><div><div></div></div><div><div></div></div><div><div></div></div><div><div></div></div><div><div></div></div><div><div></div></div><div><div></div></div><div><div></div></div><div><div></div></div><div><div></div></div><div><div></div></div><div><div></div></div><div><div></div></div><div><div></div></div><div><div></div></div><div><div></div></div><div><div></div></div><div><div></div></div><div><div></div></div><div><div></div></div><div><div></div></div><div><div></div></div><div><div></div></div><div><div></div></div><div><div></div></div><div><div></div></div><div><div></div></div><div><div></div></div><div><div></div></div><div><div></div></div><div><div></div></div><div><div></div></div><div><div></div></div><div><div></div></div><div><div></div></div><div><div></div></div><div><div></div></div><div><div></div></div><div><div></div></div><div><div></div></div><div><div></div></div><div><div></div></div><div><div></div></div><div><div></div></div><div><div></div></div><div><div></div></div><div><div></div></div><div><div></div></div><div><div></div></div><div><div></div></div><div><div></div></div><div><div></div></div><div><div></div></div><div><div></div></div><div><div></div></div><div><div></div></div><div><div></div></div><div><div></div></div><div><div></div></div><div><div></div></div><div><div></div></div><div><div></div></div><div><div></div></div><div><div></div></div><div><div></div></div><div><div></div></div><div><div></div></div><div><div></div></div><div><div></div></div><div><div></div></div><div><div></div></div><div><div></div></div><div><div></div></div><div><div></div></div><div><div></div></div><div><div></div></div><div><div></div></div><div><div></div></div><div><div></div></div><div><div></div></div><div><div></div></div><div><div></div></div><div><div></div></div><div><div></div></div><div><div></div></div><div><div></div></div><div><div></div></div><div><div></div></div><div><div></div></div><div><div></div></div><div><div></div></div><div><div></div></div><div><div></div></div><div><div></div></div><div><div></div></div><div><div></div></div><div><div></div></div><div><div></div></div><div><div></div></div><div><div></div></div><div><div></div></div><div><div></div></div><div><div></div></div><div><div></div></div><div><div></div></div><div><div></div></div><div><div></div></div><div><div></div></div><div><div></div></div><div><div></div></div><div><div></div></div><div><div></div></div><div><div></div></div><div><div></div></div><div><div></div></div><div><div></div></div><div><div></div></div><div><div></div></div><div><div></div></div><div><div></div></div><div><div></div></div><div><div></div></div><div><div></div></div><div><div></div></div><div><div></div></div><div><div></div></div><div><div></div></div><div><div></div></div><div><div></div></div><div><div></div></div><div><div></div></div><div><div></div></div><div><div></div></div><div><div></div></div><div><div></div></div><div><div></div></div><div><div></div></div><div><div></div></div><div><div></div></div><div><div></div></div><div><div></div></div><div><div></div></div><div><div></div></div><div><div></div></div><div><div></div></div><div><div></div></div><div><div></div></div><div><div></div></div><div><div></div></div><div><div></div></div><div><div></div></div><div><div></div></div><div><div></div></div><div><div></div></div><div><div></div></div><div><div></div></div><div><div></div></div><div><div></div></div><div><div></div></div><div><div></div></div><div><div></div></div><div><div></div></div><div><div></div></div><div><div></div></div><div><div></div></div><div><div></div></div><div><div></div></div><div><div></div></div><div><div></div></div><div><div></div></div><div><div></div></div><div><div></div></div><div><div></div></div><div><div></div></div><div><div></div></div><div><div></div></div><div><div></div></div><div><div></div></div><div><div></div></div><div><div></div></div><div><div></div></div><div><div></div></div><div><div></div></div><div><div></div></div><div><div></div></div><div><div></div></div><div><div></div></div><div><div></div></div><div><div></div></div><div><div></div></div><div><div></div></div><div><div></div></div><div><div></div></div><div><div></div></div><div><div></div></div><div><div></div></div><div><div></div></div><div><div></div></div><div><div></div></div><div><div></div></div><div><div></div></div><div><div></div></div><div><div></div></div><div><div></div></div><div><div></div></div><div><div></div></div><div><div></div></div><div><div></div></div><div><div></div></div><div><div></div></div><div><div></div></div><div><div></div></div><div><div></div></div><div><div></div></div><div><div></div></div><div><div></div></div><div><div></div></div><div><div></div></div><div><div></div></div><div><div></div></div><div><div></div></div><div><div></div></div><div><div></div></div><div><div></div></div><div><div></div></div><div><div></div></div><div><div></div></div><div><div></div></div><div><div></div></div><div><div></div></div><div><div></div></div><div><div></div></div><div><div></div></div><div><div></div></div><div><div></div></div><div><div></div></div><div><div></div></div><div><div></div></div><div><div></div></div><div><div></div></div><div><div></div></div><div><div></div></div><div><div></div></div><div><div></div></div><div><div></div></div><div><div></div></div><div><div></div></div><div><div></div></div><div><div></div></div><div><div></div></div><div><div></div></div><div><div></div></div><div><div></div></div><div><div></div></div><div><div></div></div><div><div></div></div><div><div></div></div><div><div></div></div><div><div></div></div><div><div></div></div><div><div></div></div><div><div></div></div><div><div></div></div><div><div></div></div><div><div></div></div><div><div></div></div><div><div></div></div><div><div></div></div><div><div></div></div><div><div></div></div><div><div></div></div><div><div></div></div><div><div></div></div><div><div></div></div><div><div></div></div><div><div></div></div><div><div></div></div><div><div></div></div><div><div></div></div><div><div></div></div><div><div></div></div><div><div></div></div><div><div></div></div><div><div></div></div><div><div></div></div><div><div></div></div><div><div></div></div><div><div></div></div><div><div></div></div><div><div></div></div><div><div></div></div><div><div></div></div><div><div></div></div><div><div></div></div><div><div></div></div><div><div></div></div><div><div></div></div><div><div></div></div><div><div></div></div><div><div></div></div><div><div></div></div><div><div></div></div><div><div></div></div><div><div></div></div><div><div></div></div><div><div></div></div><div><div></div></div><div><div></div></div><div><div></div></div><div><div></div></div><div><div></div></div><div><div></div></div><div><div></div></div><div><div></div></div><div><div></div></div><div><div></div></div><div><div></div></div><div><div></div></div><div><div></div></div><div><div></div></div><div><div></div></div><div><div></div></div><div><div></div></div><div><div></div></div><div><div></div></div><div><div></div></div><div><div></div></div><div><div></div></div><div><div></div></div><div><div></</div></div></div></div></div></div>				
---	--	--	--	--

If you want to add more zones, just do it the same as above.

Modify Zone

Select the row of table “Zone”, you can modify the zone

Database

- CommandTypeDefinition
- HVACInZone
- HVACSetUp
- LightInZone
- LightTypeDefinition
- ListTABLE
- MoodCommands
- MoodIconDefinition
- MoodInZone
- ShadeIconDefinition
- ShadesInZone
- SongPresentsTABLE
- SongsTABLE
- SystemDefinition
- SystemInZone
- TVInZone
- ZAudioId
- ZaudioInZone
- ZoneIconDefine
- Zones

Database SQL Data Design DDL

Refresh

RecNo	ZoneID	ZoneName	ZoneIconID	SequenceNo
Click here to define a filter				
1	1	Living Room	1	2
2	2	Bed Room	2	3
3	3	Meeting	3	4
4	4	Dome Kit	14	1
5	5	KitchenRoom	4	5
6	6	ParkingRoom	5	6
7	7	Parking	6	7
8	8	Gymroom	7	8
9	9	MastRoom	8	9
10	10	Dining Room	10	10

Delete zone

RecNo	ZoneID	ZoneName	ZoneIconID	SequenceNo
Click here to define a filter				
1	1	Living Room	1	2
2	2	Bed Room	2	3
3	3	Meeting	3	4
4	4	Dome Kit	14	1
5	5	KitchenRoom	4	5
6	6	ParkingRoom	5	6
7	7	Parking	6	7
8	8	Gymroom	7	8
9	9	MastRoom	8	9
10	10	Dining Room	10	10

Record Editor
 Text Editor
 Image Editor
 Hex Editor
 Set to NULL

Switch to Cell select mode
 Set cells to value...
 Set cells to NULL

 Delete selected record

 Select columns

6. Systems in Zone

Systems definition

RecNo	SystemID	SystemName
1	1	Light
2	2	HVAC
3	3	Z-Audio
4	4	Shades
5	5	TV
6	6	DVD
7	7	SAT.
8	8	Apple TV
9	9	Projector

What systems does it have in each zone?

It can be configured according to the real situation of your project

Select table **SystemInZone**

RecNo	ZoneID	SystemID
1	1	1
2	1	2
3	1	3
4	1	4
5	2	6
6	2	1
7	2	2
8	2	3
9	2	5
10	3	1
11	3	2
12	3	3
13	3	6

ZoneID: from the table **Zones**, you can know the ZoneID from each Zone.

SystemID: from the table **SystemDefinition**, you can know the SystemID for each system.

Add the systems that you have to each zone

For example:

In the Living room, it has lights, HVAC, Z-Audio, Shade,

from the table **Zones**, we know the ZoneID is 1

from the table **SystemDefinition**, we know the **SystemID** as below:

Light=1

HVAC=2

Z-Audio=3

Shades=4

TV=5

DVD=6

SAT. =7

Apple TV=8

Projector=9

So the data will be added to the table **SystemInZone** as below:

⏮	⏪	⏩	⏭	⏮	+	-	⏴	⏵
RecNo	ZoneID	SystemID	Click here to define a filter					
•	1	1	1					
•	2	1	2					
•	3	1	3					
➤	4	1	4					

Smart-Bus IPHONE App will show the systems of zone according to the settings of table **SystemInZone**







7. Lights in Zone


the lights of each zone are stored on the table **LightInZone**

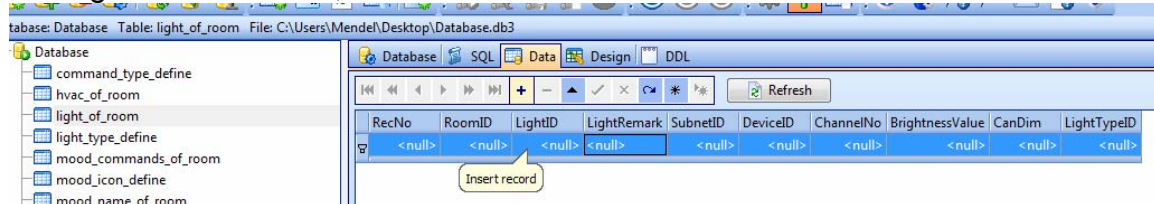
The Field of table “LightInZone”

Field	Remark	Value
ZoneID	The ZoneID can be known from the table Zones	Start from 1
LightID	ID of light	Start from 1
LightRemark	Light remark	
SubnetID	Address of Dimmer / Relay	0-254
DeviceID		0-254
ChannelNo	Channel no of light	0-254
CanDim	Dimmable or not Dimmable if the light can be dimmed, it equal 1 , if the light can not be dimmed, it equal 0	0 or 1
LightTypeID	Some different light icons are available, please the definition below	1-3
SequenceNo	It's the display order of lights	Start from 1

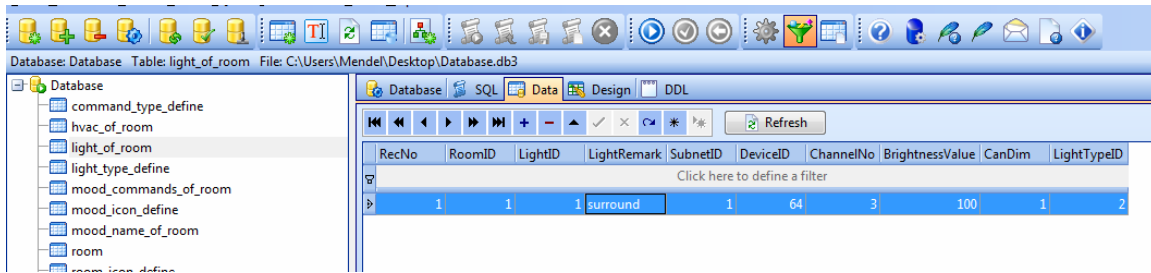
The definition of LightTypeID

LightTypeID	Name	Icon
1	incandescent light	
2	spot light	
3	fluorescent light	
4	chandelier light	

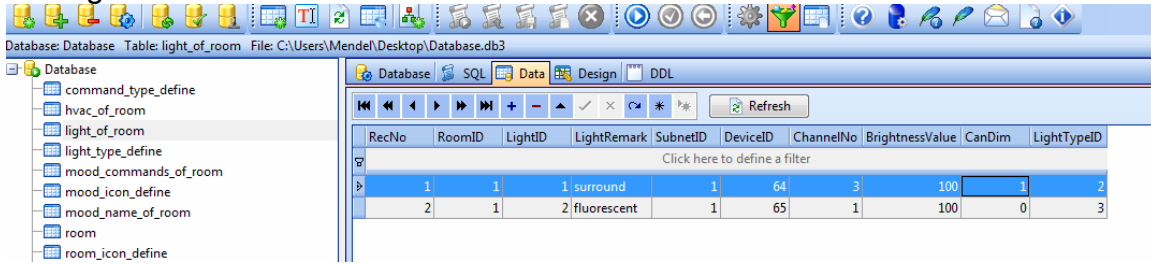
Add light 1 “surround”, Press 



Input data of light



Add light 2 “fluorescent”



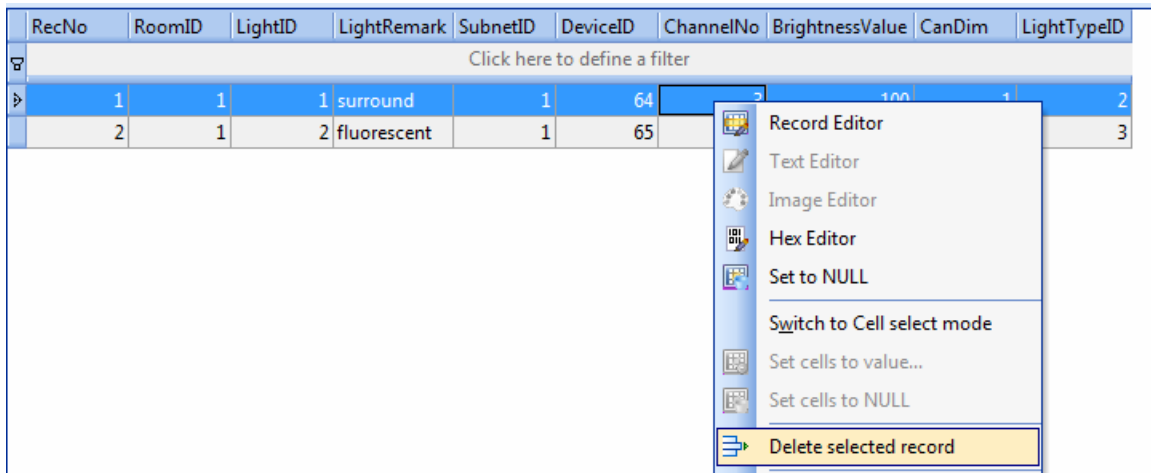
Limitless lights can be added to the zone.

Modify Light of zone

RecNo	RoomID	LightID	LightRemark	SubnetID	DeviceID	ChannelNo	BrightnessValue	CanDim	LightTypeID
Click here to define a filter									
1	1	1	surround	1	64	3	100	1	2

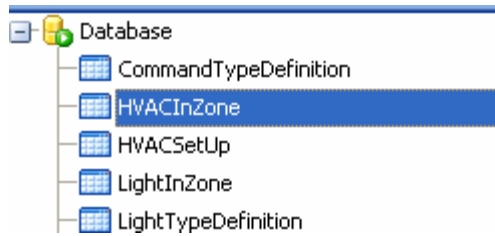
Delete the light of zone

Select the row that you want to delete, right click and select “Delete selected record”



8. AC in Zone

Select the table HVACInZone



Field of table **HVACInZone**

Field	Remark	Value
ZoneID	ZoneID is defined in the table Zones	
SubnetID	Address of HVAC / DDP	1-254
DeviceID		1-254

Others settings

Select the table **HVACSetUp**

Field of table HVACSetUp

Field	Remark	Value
IsCelsiur	Celsius=true Fahrenheit=false	True /False
TempertureOfCold	it's for most common button of cold	Number
TempertureOfCool	it's for most common button of cool	Number
TempertureOfWarm	it's for most common button of warm	Number
TempertureOfHot	it's for most common button of Hot	Number



9. Z-Audio Settings

Select the table **ZaudioInZone**

- ☐ TVInZone
- ☐ ZAudioId
- ☒ ZaudioInZone
- ☐ ZoneIconDefine

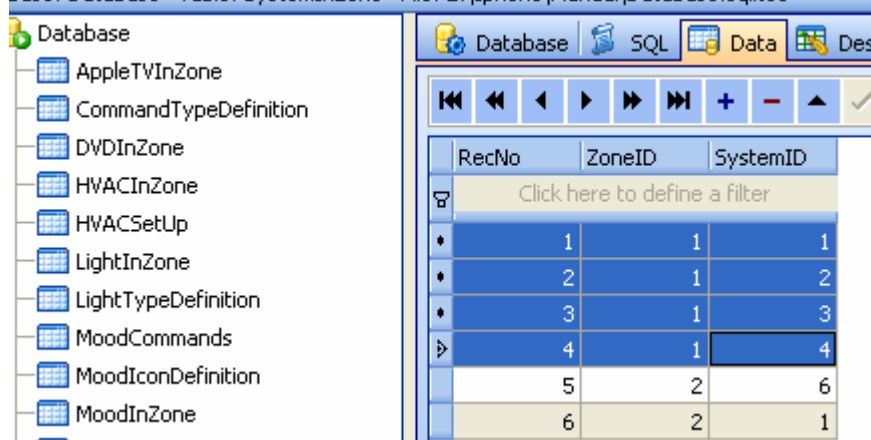
Add the address of z-audio to the table **ZaudioInZone**

	RecNo	ZoneID	SubnetID	DeviceID
	Click here to define a filter			
▶	1	1	1	200
	2	2	1	31

10. Media in Zone

Media includes TV, Apple TV, DVD, Projector, SAT., each device has separated page, and each page can be shown or hidden.

in table **SystemInZone**, Add the systems that you have to the zone.



The screenshot shows a database application interface. On the left is a tree view of the database schema with tables like AppleTVInZone, CommandTypeDefinition, DVDInZone, HVACInZone, HVACSetUp, LightInZone, LightTypeDefinition, MoodCommands, MoodIconDefinition, and MoodInZone. The main window displays the 'SystemInZone' table with columns RecNo, ZoneID, and SystemID. The table contains 6 records. Record 4 is selected.

RecNo	ZoneID	SystemID
1	1	1
2	1	2
3	1	3
4	1	4
5	2	6
6	2	1

System definition:

RecNo	SystemID	SystemName
1	1	Light
2	2	HVAC
3	3	Z-Audio
4	4	Shades
5	5	TV
6	6	DVD
7	7	SAT.
8	8	Apple TV
9	9	Projector

10.1 TV

10.1.1. System Settings if has TV in the Zone

Suppose to the zone ID=3

If you have TV in the zone, you need to add it to table **SystemInZone**

The SystemID of TV is: 5

<div><div><div>⏮</div><div>⏪</div><div>⏩</div><div>⏭</div><div>⏮</div><div>⏪</div><div>⏩</div><div>⏭</div><div>+</div><div>-</div><div>▲</div><div>✓</div></div></div>			
	RecNo	ZoneID	SystemID
🔍	Click here to define a filter		
	7	2	1
	8	2	2
	9	2	3
	10	2	5
•	11	3	1
•	12	3	2
•	13	3	3
•	14	3	6
•	15	3	5
•	16	3	7
•	17	3	8
•	18	3	9
	19	4	1
	20	4	2

10.1.2. TV Settings in Zone

Select table **TVInZone**

Index	Name	Declared Type	Type
▶ 1	ZoneID	INT	INT
2	SubnetID	INT	INT
3	DeviceID	INT	INT
4	UniversalSwitchIDforOn	INT	INT
5	UniversalSwitchStatusforOn	INT	INT
6	UniversalSwitchIDforOff	INT	INT
7	UniversalSwitchStatusforOff	INT	INT
8	UniversalSwitchIDforCH+	INT	INT
9	UniversalSwitchIDforCH-	INT	INT
10	UniversalSwitchIDforVOL+	INT	INT
11	UniversalSwitchIDforVOL-	INT	INT
12	UniversalSwitchIDforMute	INT	INT
13	UniversalSwitchIDforMenu	INT	INT
14	UniversalSwitchIDforSource	INT	INT
15	UniversalSwitchIDforOK	INT	INT

Subnet ID, Device ID: Address of IR Emitter / 9in 1 sensor

Input the Universal ID for the following item:

UniversalSwitchIDforOn
UniversalSwitchStatusforOn
UniversalSwitchIDforOff
UniversalSwitchStatusforOff
UniversalSwitchIDforCH+
UniversalSwitchIDforCH-
UniversalSwitchIDforVOL+
UniversalSwitchIDforVOL-
UniversalSwitchIDforMute
UniversalSwitchIDforMenu
UniversalSwitchIDforSource
UniversalSwitchIDforOK

RecNo	ZoneID	SubnetID	DeviceID	UniversalSwitchIDforOn	UniversalSwitchStatusforOn	UniversalSwitchIDforOff	UniversalS
Click here to define a filter							
1	1	1	50	1	255	1	
2	2	1	2	1	255	1	
3	3	1	2	1	255	1	
4	4	1	2	1	255	1	
5	5	1	2	1	255	1	
6	6	1	2	1	255	1	
7	7	1	2	1	255	1	
8	8	1	2	1	255	1	
9	9	1	2	1	255	1	

10.2 Apple TV

10.2.1 System Settings if has Apple TV in the Zone

Suppose to the zone ID=3

if you have Apple TV in the zone, you need to add it to table **SystemInZone**

The SystemID of Apple TV is: 8

<div> <div> <div>⏮</div> <div>⏪</div> <div>⏩</div> <div>⏭</div> <div>⏴</div> <div>⏵</div> <div>⏶</div> <div>⏷</div> <div>⏸</div> <div>⏹</div> <div>⏺</div> <div>⏻</div> <div>⏼</div> <div>⏽</div> <div>⏾</div> <div>⏿</div> </div> <div> <div>+</div> <div>-</div> <div>⬆</div> <div>✓</div> <div>⌂</div> </div> </div>			
	RecNo	ZoneID	SystemID
🔍	Click here to define a filter		
	7	2	1
	8	2	2
	9	2	3
	10	2	5
•	11	3	1
•	12	3	2
•	13	3	3
•	14	3	6
•	15	3	5
•	16	3	7
•	17	3	8
•	18	3	9
	19	4	1
	20	4	2

10.2.2. Apple TV Settings in the Zone

Select table **AppleTVInZone**

Database	SQL	Data	Design	DDL
Table name: AppleTVInZone				
Fields	Indexes	Foreign Keys	Constraints	
Index	Name	Declared Type	T	
1	ZoneID	INT	IP	
2	SubnetID	INT	IP	
3	DeviceID	INT	IP	
4	UniversalSwitchIDforOn	INT	IP	
5	UniversalSwitchStatusforOn	INT	IP	
6	UniversalSwitchIDforOff	INT	IP	
7	UniversalSwitchStatusforOff	INT	IP	
8	UniversalSwitchIDforUp	INT	IP	
9	UniversalSwitchIDforDown	INT	IP	
10	UniversalSwitchIDforLeft	INT	IP	
11	UniversalSwitchIDforRight	INT	IP	
12	UniversalSwitchIDforOK	INT	IP	
13	UniversalSwitchIDforMenu	INT	IP	
14	UniversalSwitchIDforPlayPause	INT	IP	

Subnet ID, Device ID: Address of IR Emitter / 9in 1 sensor
Input the Universal ID for the following item:

4	UniversalSwitchIDforOn
5	UniversalSwitchStatusforOn
6	UniversalSwitchIDforOff
7	UniversalSwitchStatusforOff
8	UniversalSwitchIDforUp
9	UniversalSwitchIDforDown
10	UniversalSwitchIDforLeft
11	UniversalSwitchIDforRight
12	UniversalSwitchIDforOK
13	UniversalSwitchIDforMenu
14	UniversalSwitchIDforPlayPause

10.3 DVD

10.3.1. System Settings if has DVD in the Zone

Suppose to the zone ID=3

if you have DVD in the zone, you need to add it to table **SystemInZone**

The SystemID of DVD is: 6

<div>⏮ ⏪ ⏩ ⏭ ⏯ + - ▲ ✓</div>			
RecNo	ZoneID	SystemID	
Click here to define a filter			
	7	2	1
	8	2	2
	9	2	3
	10	2	5
*	11	3	1
*	12	3	2
*	13	3	3
*	14	3	6
*	15	3	5
*	16	3	7
*	17	3	8
*	18	3	9
	19	4	1
	20	4	2

10.3.2. DVD Settings in the Zone

Select table **DVDInZone**

Index	Name	Decl
1	ZoneID	INT
2	SubnetID	INT
3	DeviceID	INT
4	UniversalSwitchIDforOn	INT
5	UniversalSwitchStatusforOn	INT
6	UniversalSwitchIDforOff	INT
7	UniversalSwitchStatusforOff	INT
8	UniversalSwitchIDfoMenu	INT
9	UniversalSwitchIDfoUp	INT
10	UniversalSwitchIDforDown	INT
11	UniversalSwitchIDforFastForward	INT
12	UniversalSwitchIDforBackForward	INT
13	UniversalSwitchIDforOK	INT
14	UniversalSwitchIDforPREVChapter	INT
15	UniversalSwitchIDforNextChapter	INT
16	UniversalSwitchIDforPlayPause	INT

Subnet ID, Device ID: Address of IR Emitter / 9in 1 sensor
Input the Universal ID for the following item:

RecNo	ZoneID	SubnetID	DeviceID	UniversalSwitchIDforOn	UniversalSwitchStatusforOn	UniversalSwitchIDforOff	UniversalSwitchSta
Click here to define a filter							
1	1	1	2	1	255	1	
2	2	1	2	1	0	1	
3	3	1	2	1	0	1	
4	4	1	2	1	255	1	
5	5	1	2	1	0	1	
6	6	1	2	1	0	1	
7	7	1	2	1	0	1	
8	8	1	2	1	0	1	
9	9	1	2	19	9	19	

10.4 Projector

10.4.1. System Settings if has Projector in the Zone

Suppose to the zone ID=3





if you have projector in the zone, you need to add it to table **SystemInZone**

The SystemID of projector is: 9

<div><div><div>⏮</div><div>⏪</div><div>⏩</div><div>⏭</div><div>⏯</div><div>+</div><div>-</div><div>⬆</div><div>✓</div></div></div>			
	RecNo	ZoneID	SystemID
🔍	Click here to define a filter		
	7	2	1
	8	2	2
	9	2	3
	10	2	5
•	11	3	1
•	12	3	2
•	13	3	3
•	14	3	6
•	15	3	5
•	16	3	7
•	17	3	8
•	18	3	9
	19	4	1
	20	4	2

10.4.2. Projector Settings in the Zone

Select table **ProjectorInZone**

Table name: ProjectorInZone	
 Fields	 Indexes
 Foreign Keys	
Index	Name
▶ 1	ZoneID
2	SubnetID
3	DeviceID
4	UniversalSwitchIDforOn
5	UniversalSwitchStatusforOn
6	UniversalSwitchIDforOff
7	UniversalSwitchStatusforOff
8	UniversalSwitchIDfoUp
9	UniversalSwitchIDforDown
10	UniversalSwitchIDforLeft
11	UniversalSwitchIDforRight
12	UniversalSwitchIDforOK
13	UniversalSwitchIDfoMenu
14	UniversalSwitchIDforSource

Subnet ID, Device ID: Address of IR Emitter / 9in 1 sensor
Input the Universal ID for the following item:

Database: Database Table: ProjectorInZone File: E:\Iphone\Manual\Database.sqlite3 SQLite Library: [Internal]

Database SQL Data Design DDL

Database

- AppleTVInZone
- CommandTypeDefinition
- DVDInZone
- HVACInZone
- HVACSetUp
- LightInZone
- LightTypeDefinition
- MoodCommands
- MoodIconDefinition
- MoodInZone
- ProjectorInZone
- SATInZone
- ShadeIconDefinition
- ShadesCommands

Refresh

RecNo	ZoneID	SubnetID	DeviceID	UniversalSwitchIDforOn	UniversalSwitchStatusforOn	UniversalSwitchIDforOff	Unive
1	1	1	11	21	255	21	
2	2	1	2	0	0	0	
3	3	1	2	0	0	0	
4	4	1	2	0	255	0	
5	5	1	2	0	0	0	
6	6	1	2	0	0	0	
7	9	1	2	22	23	24	

10.5 SAT. /Cable

10.5.1. System Settings if has SAT. In the Zone

Suppose to the zone ID=3

if you have SAT./Cable in the zone, you need to add it to table **SystemInZone**

The SystemID of SAT./Cable is: 7

Navigation icons: First, Previous, Next, Last, Add, Remove, Up, Down, Refresh

RecNo	ZoneID	SystemID
Click here to define a filter		
7	2	1
8	2	2
9	2	3
10	2	5
11	3	1
12	3	2
13	3	3
14	3	6
15	3	5
16	3	7
17	3	8
18	3	9
19	4	1
20	4	2

10.5.2. System Settings if has SAT. In the Zone

Select table **SATInZone**

Table name: SATInZone

Fields Indexes Foreign Keys

Index	Name
1	ZoneID
2	SubnetID
3	DeviceID
4	UniversalSwitchIDforOn
5	UniversalSwitchStatusforOn
6	UniversalSwitchIDforOff
7	UniversalSwitchStatusforOff
8	UniversalSwitchIDfoUp
9	UniversalSwitchIDforDown
10	UniversalSwitchIDforLeft
11	UniversalSwitchIDforRight
12	UniversalSwitchIDforOK
13	UniversalSwitchIDfoMenu
14	UniversalSwitchIDforFAV

Subnet ID, Device ID: Address of IR Emitter / 9in 1 sensor
Input the Universal ID for the following item:

Database SQL Data Design DDL

Refresh

RecNo	ZoneID	SubnetID	DeviceID	UniversalSwitchIDforOn	UniversalSwitchStatusforOn	UniversalSwitchIDforOff	Univer
Click here to define a filter							
1	1	1	50	25	255	25	
2	2	1	2	0	255	0	
3	3	1	2	0	0	0	
4	4	1	2	0	255	0	
5	5	1	2	0	0	0	
6	6	1	2	0	0	0	
7	9	1	2	22	255	24	

11. Shades in Zone

11.1 System settings if has shade in zone

Suppose to the zone ID=3

if you have shade in the zone, you need to add it to table **SystemInZone**

The SystemID of Shade is: 4

ShadesControlTypeDefinition	11	4	1
ShadesInZone	12	4	2
SystemDefinition	13	4	3
SystemInZone	14	4	6
TVInZone	15	3	1
ZAudioId	16	3	2
ZaudioInZone	17	3	3
ZoneIconDefine	18	3	6
Zones	19	3	5
	20	3	7
	21	3	8
	22	3	9
	23	3	4
	24	2	6

11.2 Add shades to the Zone

select table **ShadesInZone**

Table name: ShadesInZone		
Fields	Indexes	Foreign Keys
Constraints		
Index	Name	Declared Type
1	ZoneID	INT
2	ShadeID	INT
3	ShadeName	NVARCHAR
4	ShadeIconID	INT
5	SequenceNo	INTEGER
6	HasStop	INT

Table: ShadesInZone	
FileName	DESC
ZoneID	ZoneID can get from the table Zones
ShadeID	ShadeID start from 1
ShadeName	The Name of shade
ShadeIconID	Always 1
SequenceNo	The order of show
HasStop	If has the function of shade stop, please put 1, otherwise put 0

Suppose to the zone ID=3

	3	4	12 Right	1	12	1
MoodCommands	4	2	4 Left	1	4	1
MoodIconDefinition	5	2	5 Middle	1	5	1
MoodInZone	6	2	6 Right	1	6	1
ProjectorInZone	7	3	1 Left	1	1	1
SATInZone	8	3	2 Middle	1	2	1
ShadeIconDefinition	9	3	3 Right	1	3	1
ShadesCommands	10	1	1 Left	1	1	1
ShadesControlTypeDefinition	11	1	2 Right	1	2	1
ShadesInZone	12	1	3 Middle	1	3	0

11.3 Commands for the shade

Select table **ShadesCommands**

Table name: ShadesCommands		
Fields	Indexes	Foreign Keys
Constraints		
Index	Name	Declared Type
1	ZoneID	INT
2	ShadeID	INT
3	ShadeControlType	INT
4	CommandID	INT
5	SequenceNo	INT
6	Remark	NVARCHAR(50)
7	SubnetID	INT
8	DeviceID	INT
9	CommandTypeID	INT
10	FirstParameter	INT
11	SecondParameter	INT
12	ThirdParameter	INT
13	DelayMillisecondAfterSend	INT

Table: ShadesCommands	
FileName	DESC
ZoneID	ZoneID can get from the table Zones
ShadeID	ShadeID start from 1,check the table ShadesInZone
ShadeControlType	Open shade: 1 Close Shade: 0 Stop shade:2
CommandID	check the table ShadesInZone
SequenceNo	The order of the command executing.
Remark	
SubnetID	Address of Relay module / IR Emitter / 9in1
DeviceID	

CommandTypeID	See the commandTypeID definition below if you use relay module to control shade, you need to choose Single channel control ; If you control shade by IR, you need to choose Universal Switch Control .
FirstParameter	Please see the table below
SecondParameter	Please see the table below
ThirdParameter	Please see the table below
DelayMillisecondAfterSend	Delay after this command has been sent Unit=millisecond

ConmandTypeID Definition

CommandTypeID	Command Type Name	Remark	FirstParameter	SecondParameter	ThirdParameter
0	Scene control		Zone No (1-254)	Scene No (0-254)	Unused (set 0)
1	Sequence Control		Zone No (1-254)	Sequence No (0-254)	Unused (set 0)
2	Universal Switch Control		Universal Switch ID (0-255)	Switch Control status (255:on 0: off)	Unused (set 0)
3	Invalid	Invalid command, it will not take any actions	Any value (0-255)	Any value (0-255)	Any value (0-65535)
4	Single Channel Control		Channel No (1-255)	Brightness percentage (0 -100)	Running Time, unit: second (0 -3600)
5	Broadcast scene	Run the specific scene in all area of current module	Broadcast area (Must be set 255)	Scene No (0-254)	Unused (set 0)
6	Broadcast All channels	Control all the channels of current module	Broadcast all channels (Must be set 255)	Brightness percentage (0 -100)	Running Time, unit: second (0 -3600)
7	Curtain Control	Control curtain if you are using g3 curtain module	Curtain No (1-4)	Curtain Control Status (0: Stop 1: Open	Unused (set 0)

				2: Close)	
8	Timer Control		Channel No (1-255)	Control Status (255: open 0 : close)	Unused (set 0)
9	SMS Control	Control G3 SMS module	Type ID (0: invalid 1: SMS Message)	SMS Command No (0-255)	Unused (set 0)
10	Panel control		Panel control for A/C		
			FirstParameter (TypeID)	SecondParameter (Value)	ThirdParameter
			0=(invalid)	0	0
			1=(enable/disable IR receive function of DLP)	0: (disable) 1: (enable)	0
			3=(Power on/off A/C)	0: (power off) 1: (power on)	0
			4=(cool Set point)	0-30 c 32-86F	0
			5=(FAN Speed)	0: (auto) 1: (High) 2: (Medium) 3: (low)	0
			6=(AC mode)	0: (Cool) 1: (Heat) 2: (FAN) 3: (Auto)	0
			7=(Heat set point)	0-30 c 32-86F	
			8=(Auto Set point)	0-30 c 32-86F	
11	Security Mode control		Zone no (1-8)	Mode No 1: vacation 2: away 3: night 4: Night with guest 5: Day 6: Disarm	Unused (set 0)
12	Security Alarm		Zone no (1-8)	Alarm No 1: vacation 2: Away 4: Night 8: Night with guest 16: Day 32: Siren 64: Power 128:	Unused (set 0)

				Temperature 256: Fire 512: Gas 1024: Panic 2048: Emergency 4096: Current		
18	Z-Audio		Z-Audio			
			FirstParameter (Type ID)	SecondParameter (Value)	ThirdParameter	
			1=Music Source	Music Source No SD card =1 Audio In =2 FTP Server =3 FM Radio =4	N/A	
			3=Song List / Radio List Control	Type of list Control PREV. Song List =1 Next Song List=2 Specify Song List No=3 PREV Radio Channel=4 Next Radio Channel =5 Specify Radio No=6	Song List No / Radio No (only available when Second Parameter is equal 3 or 6)	
			4=Play Control	Previous Song=1 Next Song=2 Play=3 Stop=4	N/A	
			5=Volume Control	Percentage of VOL (0~ 100, 100% is max. VOL, 0 is mute)	N/A	
			6=Specify Song Control	Song List No (1byte,0-255, Song List No 0 is for alarm voice)	Song No (1 – 999)	

Example Settings if control shade by relay module

Command Type: Single Channel control (ID=4)

ShadeControlType: Open shade(ID=1)

RecNo	ZoneID	ShadeID	ShadeControlT...	Comman...	Seque...	Remark	SubnetID	DeviceID	CommandTypeID	FirstParameter	SecondParameter	ThirdPar...	Delay...
Click here to define a filter													
1	1	1	1	1	1	open shade	1	65	4	1	100	0	2000
2	1	1	1	2	2	open	1	64	2	1	0	0	2000
3	1	1	1	1	3	open	1	64	2	1	6	0	2000
4	1	1	0	1	1	close	1	64	2	1	7	0	2000
5	1	1	0	1	3	close	1	64	4	1	8	0	2000
6	1	1	2	2	3	stop	1	65	4	1	0	0	2000
7	1	1	0	2	2	close	1	65	4	1	0	0	0
8	3	1	1	1	1	Open shade	1	3	4	1	100	0	0
9	3	1	0	1	1	close shade	1	3	4	2	100	0	0

Example Settings if control shade by relay module

Command Type: Single Channel control (ID=4)

ShadeControlType: Close shade (ID=0)

RecNo	ZoneID	ShadeID	ShadeControlT...	Comman...	Seque...	Remark	SubnetID	DeviceID	CommandTypeID	FirstParameter	SecondParameter	ThirdPar...	Delay...
Click here to define a filter													
1	1	1	1	1	1	open shade	1	65	4	1	100	0	2000
2	1	1	1	2	2	open	1	64	2	1	0	0	2000
3	1	1	1	1	3	open	1	64	2	1	6	0	2000
4	1	1	0	1	1	close	1	64	2	1	7	0	2000
5	1	1	0	1	3	close	1	64	4	1	8	0	2000
6	1	1	2	2	3	stop	1	65	4	1	0	0	2000
7	1	1	0	2	2	close	1	65	4	1	0	0	0
8	3	1	1	1	1	Open shade	1	3	4	1	100	0	0
9	3	1	0	1	1	close shade	1	3	4	2	100	0	0

Example Settings if control shade by relay module

Command Type: Single Channel control (ID=4)

ShadeControlType: Stop shade (ID=2)

RecNo	ZoneID	ShadeID	ShadeControlT...	Comman...	Seque...	Remark	SubnetID	DeviceID	CommandTypeID	FirstParameter	SecondParameter	ThirdPar...	Delay...
Click here to define a filter													
1	1	1	1	1	1	open shade	1	65	4	1	100	0	2000
2	1	1	1	2	2	open	1	64	2	1	0	0	2000
3	1	1	1	1	3	open	1	64	2	1	6	0	2000
4	1	1	0	1	1	close	1	64	2	1	7	0	2000
5	1	1	0	1	3	close	1	64	4	1	8	0	2000
6	1	1	2	2	3	stop	1	65	4	1	0	0	2000
7	1	1	0	2	2	close	1	65	4	1	0	0	0
8	3	1	1	1	1	Open shade	1	3	4	1	100	0	0
9	3	1	0	1	1	close shade	1	3	4	2	100	0	0
10	3	1	2	1	1	Stop shade	1	3	4	1	0	0	0
11	3	1	2	2	2	Stop shade	1	3	4	2	0	0	0

Example Settings if control shade by IR

Command Type: Universal Switch (ID=2)

ShadeControlType: Open shade(ID=1)

RecNo	ZoneID	ShadeID	ShadeControlT...	Comman...	Seque...	Remark	SubnetID	DeviceID	CommandTypeID	FirstParameter	SecondParameter	ThirdPar...	Delay...
Click here to define a filter													
1	1	1	1	1	1	open shade	1	65	4	1	100	0	2000
2	1	1	1	2	2	open	1	64	2	1	0	0	2000
3	1	1	1	1	3	open	1	64	2	1	6	0	2000
4	1	1	0	1	1	close	1	64	2	1	7	0	2000
5	1	1	0	1	3	close	1	64	4	1	8	0	2000
6	1	1	2	2	3	stop	1	65	4	1	0	0	2000
7	1	1	0	2	2	close	1	65	4	1	0	0	0
8	3	1	1	1	1	Open shade	1	3	4	1	100	0	0
9	3	1	0	1	1	close shade	1	3	4	2	100	0	0
10	3	1	2	1	1	Stop shade	1	3	4	1	0	0	0
11	3	1	2	2	2	Stop shade	1	3	4	2	0	0	0
12	3	2	1	1	1	Open shade	1	3	2	1	255	0	0
13	3	2	0	1	1	close shade	1	3	2	2	255	0	0

Example Settings if control shade by IR

Command Type: Universal Switch (ID=2)

ShadeControlType: Close shade(ID=0)

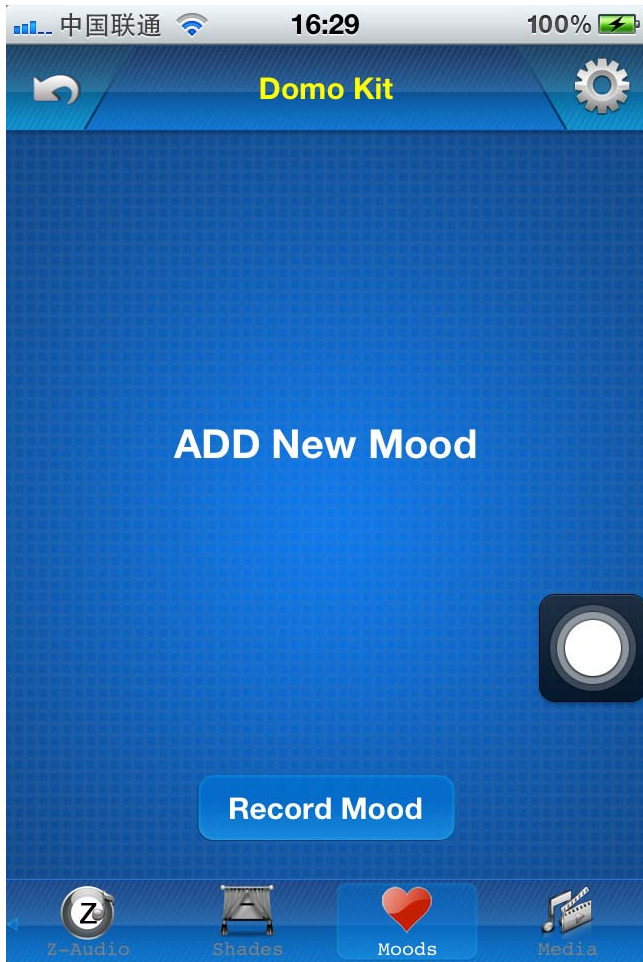
RecNo	ZoneID	ShadeID	ShadeControlT...	Comman...	Seque...	Remark	SubnetID	DeviceID	CommandTypeID	FirstParameter	SecondParameter	ThirdPar...	Delay...
Click here to define a filter													
1	1	1	1	1	1	open shade	1	65	4	1	100	0	2000
2	1	1	1	2	2	open	1	64	2	1	0	0	2000
3	1	1	1	1	3	open	1	64	2	1	6	0	2000
4	1	1	0	1	1	close	1	64	2	1	7	0	2000
5	1	1	0	1	3	close	1	64	4	1	8	0	2000
6	1	1	2	2	3	stop	1	65	4	1	0	0	2000
7	1	1	0	2	2	close	1	65	4	1	0	0	0
8	3	1	1	1	1	Open shade	1	3	4	1	100	0	0
9	3	1	0	1	1	close shade	1	3	4	2	100	0	0
10	3	1	2	1	1	Stop shade	1	3	4	1	0	0	0
11	3	1	2	2	2	Stop shade	1	3	4	2	0	0	0
12	3	2	1	1	1	Open shade	1	3	2	1	255	0	0
13	3	2	0	1	1	close shade	1	3	2	2	255	0	0

12. Mood Recording in Zone

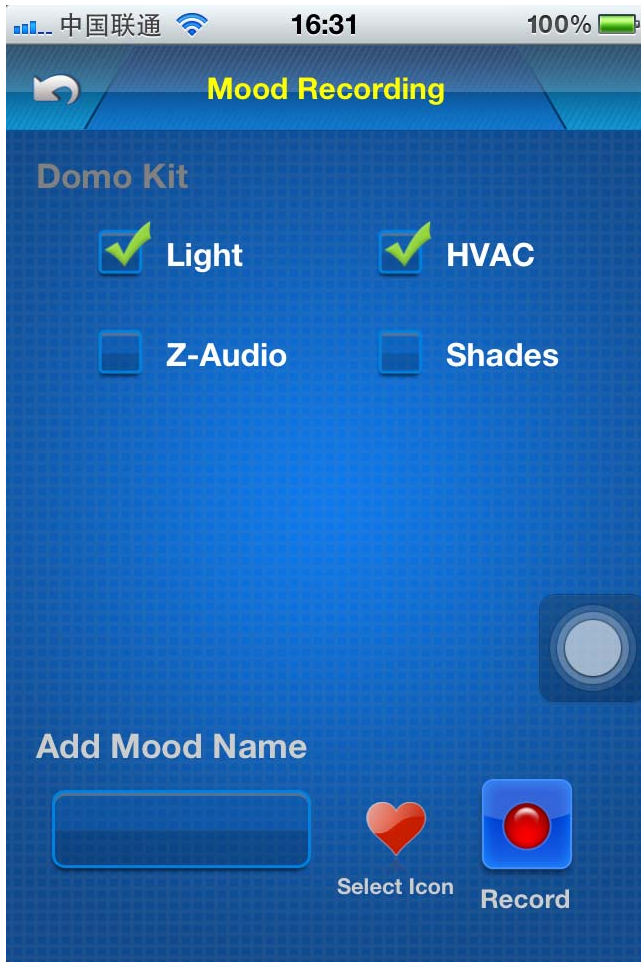
12.1 Record New Mood

Mood recording is designed for end user, No need to use any programming tool, the end user can make their own mood easily by themselves.

Go to zone that you would like to record.

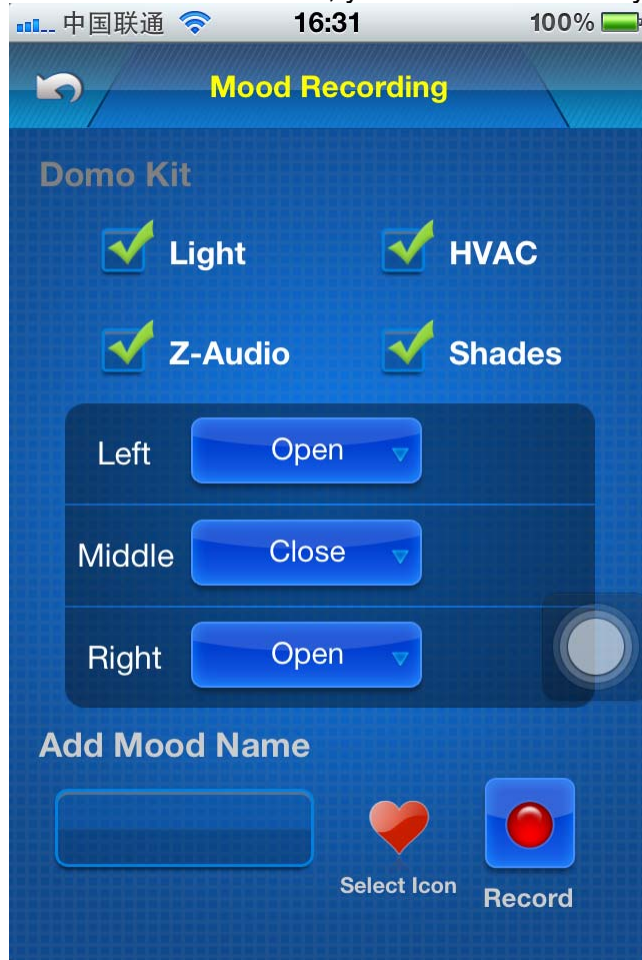


Click button “Record Mood” above

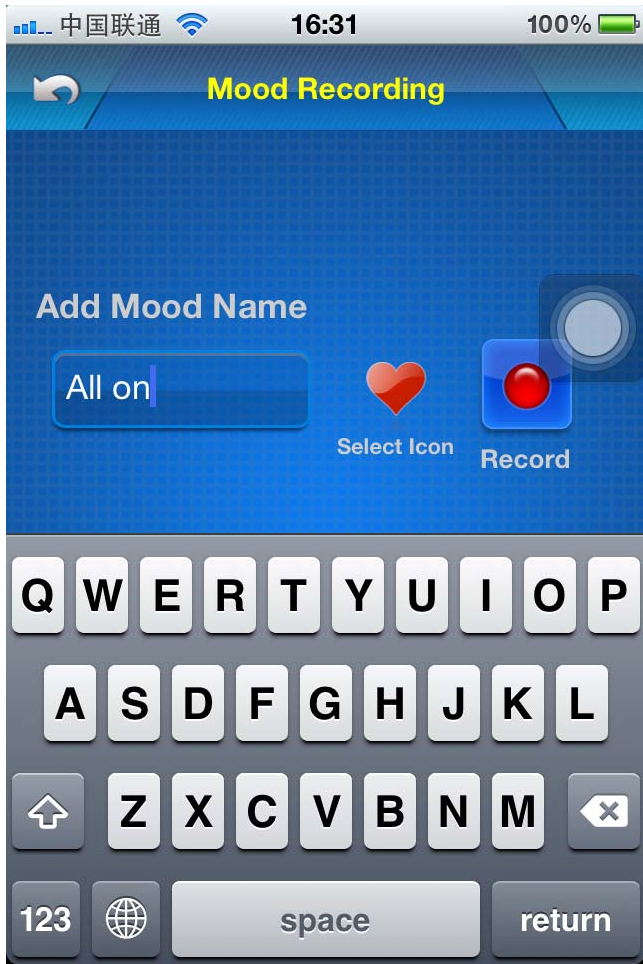


Select the devices that you would like to record such as light, HVAC, Z-Audio, Shades

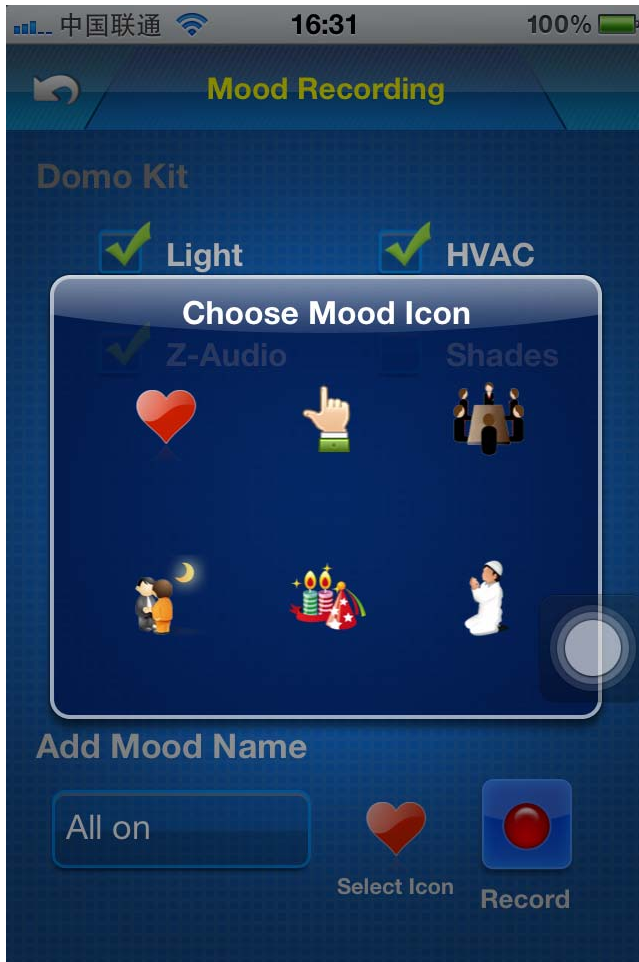
For the shades control, you need to select bypass/open/close



Type the mood name



Choose icon for the mood



Press button "Record"



Mood Recording

Domo Kit



Light



HVAC



Z-Audio



Shades



Recording Mood, Please Wait. . .

Cancel

Add Mood Name

All on



Select Icon



Record



Mood Recording

Domo Kit



Light



HVAC



Z-Audio



Shades

Record succeed!

OK



Add Mood Name

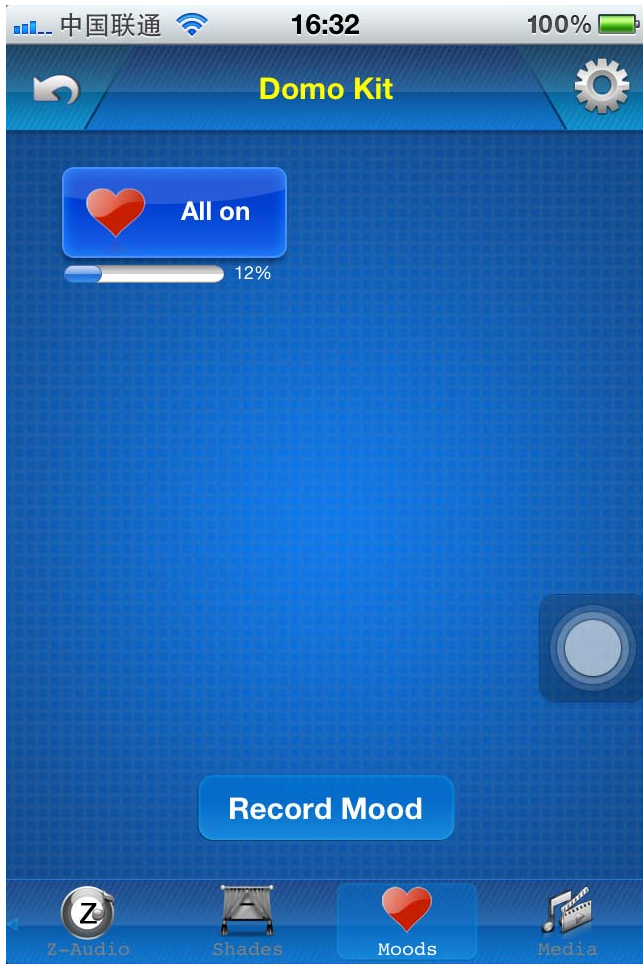
All on



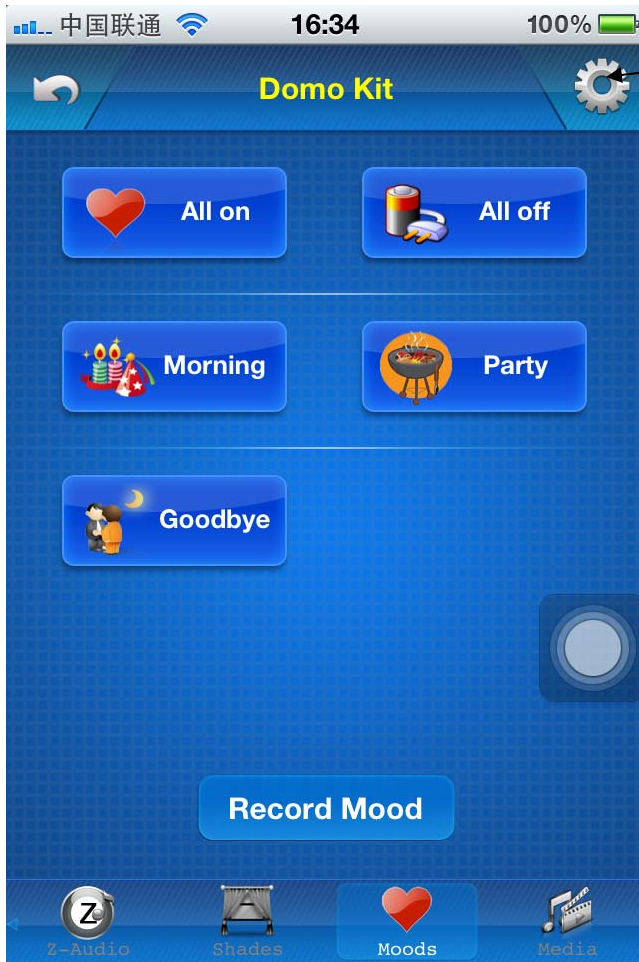
Select Icon



Record



12.2 Edit Existed Mood



Press this icon to go to
edit page



Edit Mood

Domo Kit



All on



All off



Morning



Party

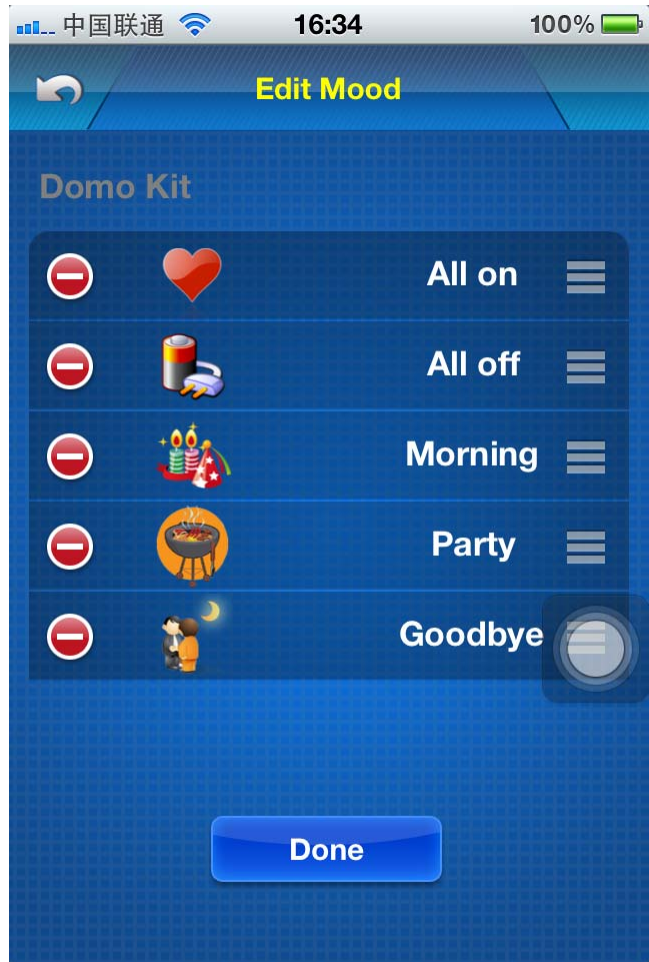


Goodbye

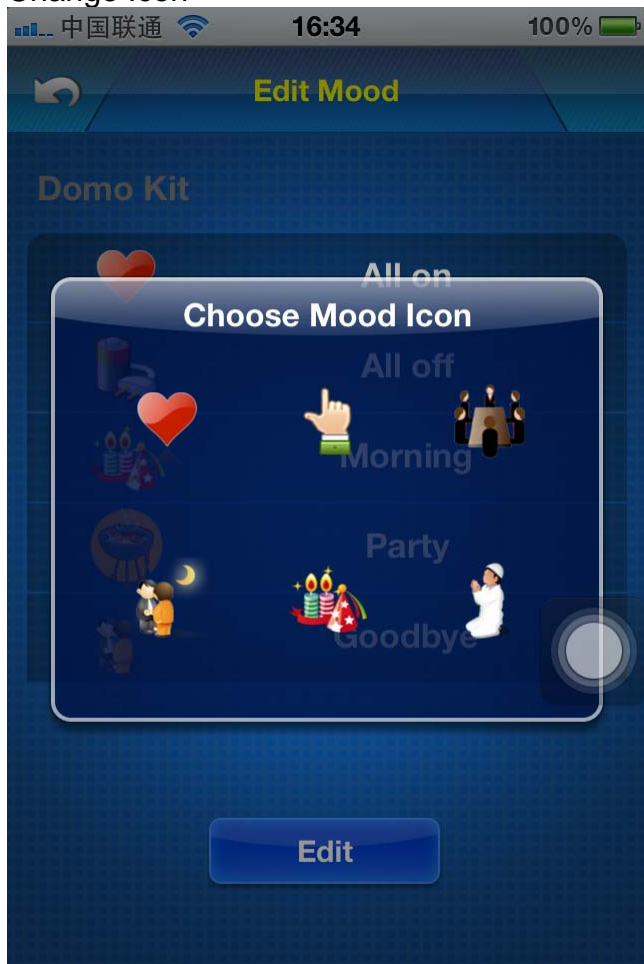


Edit

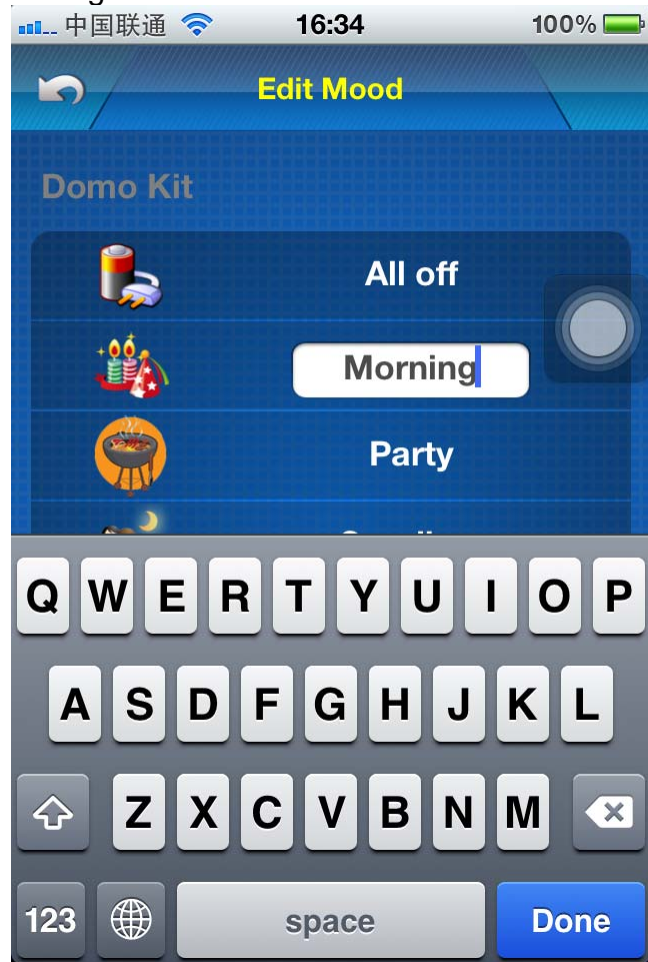
Press button "Edit" above



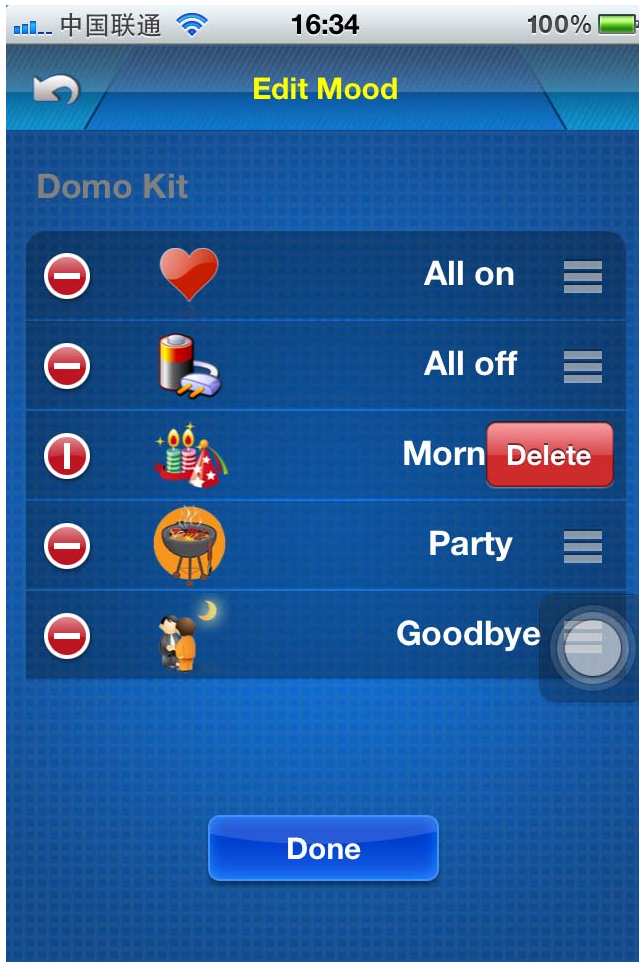
Change Icon



Change mood name



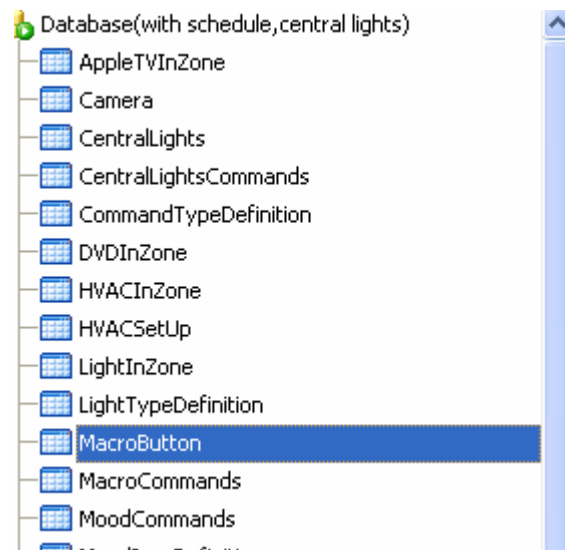
Delete existed mood



Press button "Done" to save the modification.

13. Macro Buttons

13.1 Add Macro button
select table : MacroButton



⏮

⏪

⏴

⏵

⏩

⏭

+

-

▲

✓

✕

↺

✳

☀

Refresh

RecNo	MacroID	MacroName	MacroIconID	SequenceNO
Click here to define a filter				
1	1	Meeting	1	1
2	2	Romantic	2	2
3	3	Party	3	3
4	4	TV Time	4	4
5	5	Bed Time	5	5
6	6	All On	6	6
7	7	All Off	7	7
8	8	Visitor Mode	8	8
9	9	Night	9	9
10	10	BBQ Play	10	10
11	11	Swimming	11	11
12	12	Prayer	12	12
13	13	Dinning	13	13

MacroIconID definition

MacroIconID	Icon Name	Icon
1	Meeting	
2	Romantic	






3	Party	
4	TV Time	
5	Bed Time	
6	Manual Time	
7	Energy Saving	
8	Visitor Mode	
9	Night Visitor	
10	BBQ	

11	Swimming Time	
12	Prayer Time	
13	Dimming Time	

Macro buttons will be displayed according to the **SequenceNo**

13.2 Add commands for macro button

Select table "MacroCommands"

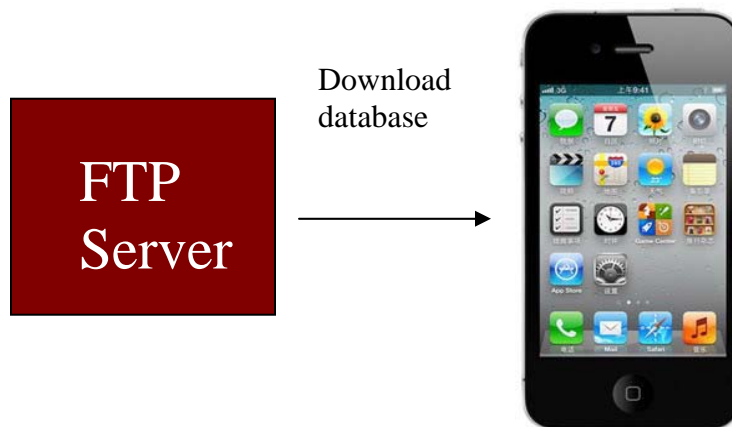
-  LightTypeDefinition
-  MacroButton
-  **MacroCommands**
-  MoodCommands
-  MoodIconDefinition

RecNo	MacroID	SequenceNo	Remark	SubnetID	DeviceID	CommandTypeID	FirstParameter	SecondParameter
Click here to define a filter								
1	1	1	All on in manager room 1	1	3	4	1	
2	1	2	meeting in meeting room 1	1	3	4	2	
3	1	3	All on in manager room 2	1	3	4	3	
4	1	4	all on 1	1	3	4	1	
5	1	5	all on 2	1	9	4	1	
6	1	6	meeting in meeting room 2	1	20	10	3	
7	1	10	meeting in meeting room 2	1	200	18	5	
8	1	8	meeting in meeting room 2	1	200	18	6	
9	1	9	meeting in meeting room 2	1	200	18	4	
10	1	7	meeting in meeting room 2	1	200	18	1	
11	1	11	all on 2	1	9	4	2	
12	1	12	all on 2	1	9	4	3	
13	1	13	all on 2	1	9	4	3	
14	1	14	all on 2	1	9	4	3	
15	1	15	all on 2	1	9	4	3	

Add commands for the macro.

For the definition of CommandTypeID, please see above.

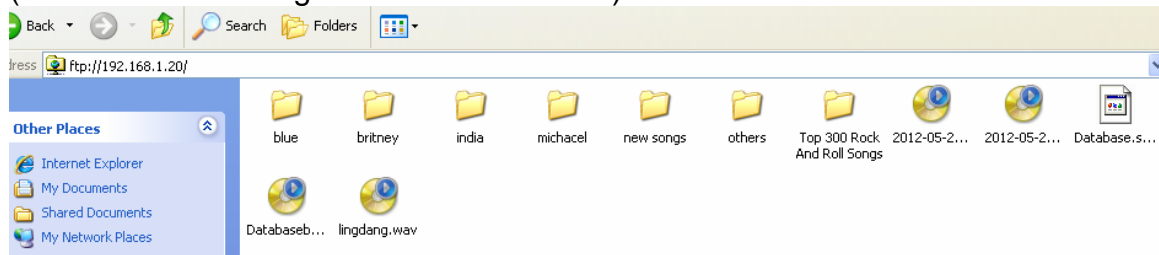
20. Download database to IPHONE/IPAD from FTP Server



Step1: Copy the database **Database.sqlite3** that you have programmed to the FTP Server
(Please do not change the database name)



Step 2: paste the database file on the root directory of FTP server
(Please do not change the database name)



Step 3: Download database to IPHONE/IPAD from FTP Server

To go to settings page, click the G4 icon on top right corner on main page



Press this G4 icon



Click the button **Database Upload & Download**



Make sure the FTP Server Address and username and password are accurate

Carrier 11:49 PM

Database Upload & Download

FTP Server Settings

FTP Server Address
i.e. ftp://192.168.1.20

Username: Password:

Save

Database Upload

Upload database from this IPHONE/IPAD to FTP Server. Database name is "Database.sqlite3"

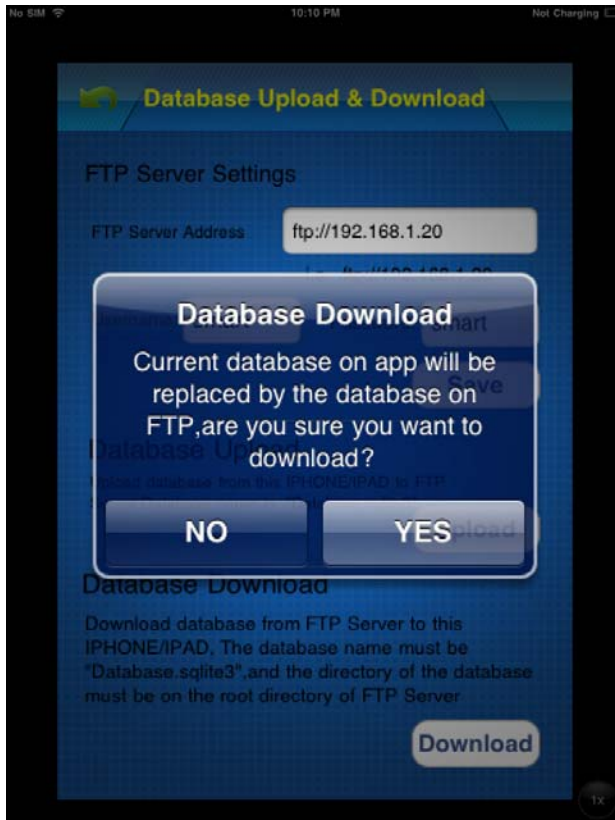
Upload

Database Download

Download database from FTP Server to this IPHONE/IPAD. The database name must be "Database.sqlite3", and the directory of the database must be on the root directory of FTP Server

Download

Click button **Download** above



When the database is downloaded, the Smart-BUS IPHONE App needs to be restarted.